

## NDUFS1 Polyclonal Antibody

### Description

<b>Product type</b>	Primary Antibody
<b>Code</b>	BT-AP05855
<b>Host</b>	Rabbit
<b>Isotype</b>	IgG
<b>Size</b>	20ul, 50ul, 100ul
<b>Immunogen</b>	The antiserum was produced against synthesized peptide derived from human NDUFS1. AA range:620-669
<b>Mol wt</b>	79468
<b>Species reactivity</b>	Human, Mouse, Rat
<b>Clonality</b>	Polyclonal
<b>Recommended application</b>	WB, IHC-p, ELISA
<b>Concentration</b>	1 mg/ml
<b>Full name</b>	NDUFS1 Antibody
<b>Synonyms</b>	NDUFS1; NADH-ubiquinone oxidoreductase 75 kDa subunit; mitochondrial; Complex I-75kD; CI-75kD

**This product is for research use only, not for use in human, therapeutic or diagnostic procedure.**

### Background

The multisubunit NADH: ubiquinone oxidoreductase (75 kDa subunit, mitochondrial) (NDUFS1) is the first enzyme complex in the electron transport chain of mitochondria. It is also named as Complex I-75kD. By use of chaotropic agents, complex I can be fragmented into 3 different fractions: a flavoprotein fraction, an iron-sulfur protein (IP) fraction, and a hydrophobic protein (HP) fraction. NDUFS1 is the largest subunit of complex I and it is a component of the iron-sulfur (IP) fragment of the enzyme.

### Recommended Dilution

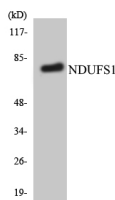
WB: 1: 500 - 1: 2000

IHC: 1: 100 - 1: 300

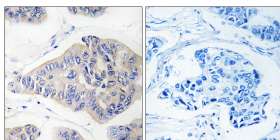
ELISA: 1: 40000

Not yet tested in other applications.

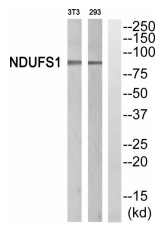
### Images



Western blot analysis of the lysates from HepG2 cells using NDUFS1 antibody.



Immunohistochemistry analysis of paraffin-embedded human breast carcinoma, using NDUFS1 Antibody. The lane on the right is blocked with the NDUFS1 peptide.



Western blot analysis of NDUFS1 Antibody. The lane on the right is blocked with the NDUFS1 peptide.

### Storage

-20°C for one year

501 Changsheng S Rd, Nanhu Dist, Jiaxing, Zhejiang, China

Tel: 86 21 31007137 | E-mail: [save@bt-laboratory.com](mailto:save@bt-laboratory.com) | [www.bt-laboratory.com](http://www.bt-laboratory.com)