

## NDUFS6 Polyclonal Antibody

### Description

<b>Product type</b>	Primary Antibody
<b>Code</b>	BT-AP05858
<b>Host</b>	Rabbit
<b>Isotype</b>	IgG
<b>Size</b>	20ul, 50ul, 100ul
<b>Immunogen</b>	The antiserum was produced against synthesized peptide derived from human NDUFS6. AA range:75-124
<b>Mol wt</b>	13712
<b>Species reactivity</b>	Human, Mouse, Rat
<b>Clonality</b>	Polyclonal
<b>Recommended application</b>	IHC-p, ELISA
<b>Concentration</b>	1 mg/ml
<b>Full name</b>	NDUFS6 Antibody
<b>Synonyms</b>	NDUFS6; NADH dehydrogenase [ubiquinone] iron-sulfur protein 6; mitochondrial; Complex I-13kD-A; CI-13kD-A; NADH-ubiquinone oxidoreductase 13 kDa-A subunit

**This product is for research use only, not for use in human, therapeutic or diagnostic procedure.**

### Background

NDUFS6 encodes a subunit of the NADH: ubiquinone oxidoreductase (complex I), which is the first enzyme complex in the electron transport chain of mitochondria. This complex functions in the transfer of electrons from NADH to the respiratory chain. The subunit encoded by NDUFS6 is one of seven subunits in the iron-sulfur protein fraction. Mutations in this gene cause mitochondrial complex I deficiency, a disease that causes a wide variety of clinical disorders, including neonatal disease and adult-onset neurodegenerative disorders.

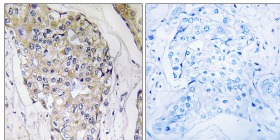
### Recommended Dilution

IHC: 1: 100 - 1: 300

ELISA: 1: 10000

Not yet tested in other applications.

### Images



Immunohistochemistry analysis of paraffin-embedded human breast carcinoma tissue, using NDUFS6 Antibody. The picture on the right is blocked with the synthesized peptide.

### Storage

-20°C for one year