

## Cytokeratin 8(Phospho Ser432) Polyclonal Antibody

### Description

<b>Product type</b>	Primary Antibody
<b>Code</b>	BT-AP05862
<b>Host</b>	Rabbit
<b>Isotype</b>	IgG
<b>Size</b>	100ul, 50ul, 20ul
<b>Immunogen</b>	The antiserum was produced against synthesized peptide derived from human Keratin 8 around the phosphorylation site of Ser432. AA range:401-450
<b>Mol wt</b>	53573
<b>Species reactivity</b>	Human, Mouse, Rat
<b>Clonality</b>	Polyclonal
<b>Recommended application</b>	WB, IHC-p, IF, ICC, ELISA
<b>Concentration</b>	1 mg/ml
<b>Full name</b>	Keratin type II cytoskeletal 8
<b>Synonyms</b>	Keratin type II cytoskeletal 8; KRT8; CYK8; Keratin; type II cytoskeletal 8; Cytokeratin-8; CK-8; Keratin-8; K8; Type-II keratin Kb8

**This product is for research use only, not for use in human, therapeutic or diagnostic procedure.**

### Background

This gene is a member of the type II keratin family clustered on the long arm of chromosome 12. Type I and type II keratins heteropolymerize to form intermediate-sized filaments in the cytoplasm of epithelial cells. The product of this gene typically dimerizes with keratin 18 to form an intermediate filament in simple single-layered epithelial cells. This protein plays a role in maintaining cellular structural integrity and also functions in signal transduction and cellular differentiation. Mutations in this gene cause cryptogenic cirrhosis. Alternatively spliced transcript variants have been found for this gene.

### Recommended Dilution

WB: 1: 500 - 1: 2000

IHC-p: 1: 100 - 1: 300

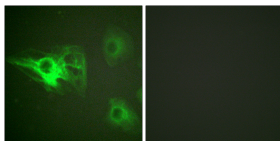
IF: 1: 200 - 1: 1000

ICC: 1: 200 - 1: 1000

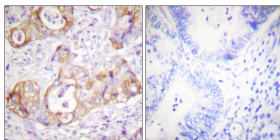
ELISA: 1: 40000

Not yet tested in other applications.

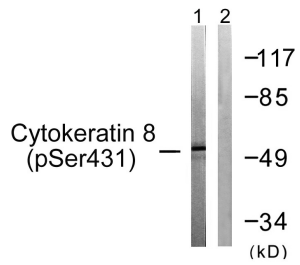
### Images



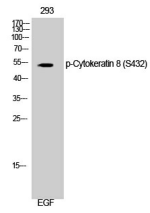
Immunofluorescence analysis of HeLa cells, using Keratin 8 (Phospho-Ser432) Antibody. The picture on the right is blocked with the phospho peptide.



Immunohistochemistry analysis of paraffin-embedded human colon carcinoma, using Keratin 8 (Phospho-Ser432) Antibody. The picture on the right is blocked with the phospho peptide.



Western Blot analysis of 293 cells using Phospho-Cytokeratin 8 (S432) Polyclonal Antibody diluted at 1:1000



Western blot analysis of lysates from 293 cells treated with EGF 200ng/ml 30', using Keratin 8 (Phospho-Ser432) Antibody. The lane on the right is blocked with the phospho peptide.

### Storage

-20°C for 1 year

501 Changsheng S Rd, Nanhu Dist, Jiaxing, Zhejiang, China

Tel: 86 21 31007137 | E-mail: [save@bt-laboratory.com](mailto:save@bt-laboratory.com) | [www.bt-laboratory.com](http://www.bt-laboratory.com)