

## DAPK3(Phospho Thr265) Polyclonal Antibody

### Description

<b>Product type</b>	Primary Antibody
<b>Code</b>	BT-AP05863
<b>Host</b>	Rabbit
<b>Isotype</b>	IgG
<b>Size</b>	100ul, 50ul, 20ul
<b>Immunogen</b>	The antiserum was produced against synthesized peptide derived from human DAPK3 around the phosphorylation site of Thr265. AA range:241-290
<b>Mol wt</b>	52536
<b>Species reactivity</b>	Human, Mouse, Rat
<b>Clonality</b>	Polyclonal
<b>Recommended application</b>	WB, IHC-p, IF, ICC, ELISA
<b>Concentration</b>	1 mg/ml
<b>Full name</b>	Death-associated protein kinase 3
<b>Synonyms</b>	Death-associated protein kinase 3; DAPK3; ZIPK; Death-associated protein kinase 3; DAP kinase 3; DAP-like kinase; Dlk; MYPT1 kinase; Zipper-interacting protein kinase; ZIP-kinase

**This product is for research use only, not for use in human, therapeutic or diagnostic procedure.**

### Background

Death-associated protein kinase 3 (DAPK3) induces morphological changes in apoptosis when overexpressed in mammalian cells. These results suggest that DAPK3 may play a role in the induction of apoptosis.

### Recommended Dilution

WB: 1: 500 - 1: 2000

IHC-p: 1: 100 - 1: 300

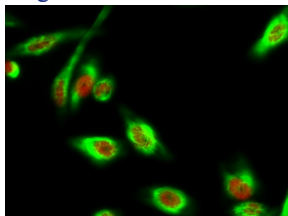
IF: 1: 200 - 1: 1000

ICC: 1: 200 - 1: 1000

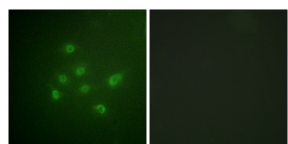
ELISA: 1: 10000

Not yet tested in other applications.

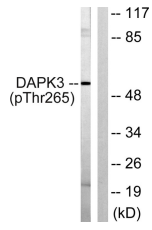
### Images



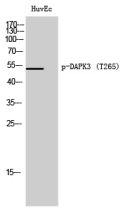
Immunofluorescence analysis of HeLa cell. DAPK3 (phospho Thr265) Polyclonal Antibody(Red) was diluted at 1:200(4°C overnight).  $\alpha$ -tubulin Monoclonal Antibody(8F11)(Green) was diluted at 1:200(4°C overnight).



Immunofluorescence analysis of A549 cells, using DAPK3 (Phospho-Thr265) Antibody. The picture on the right is blocked with the phospho peptide.



Western Blot analysis of HuvEc cells using Phospho-DAPK3 (T265) Polyclonal Antibody



Western blot analysis of lysates from HUVEC cells, using DAPK3 (Phospho-Thr265) Antibody. The lane on the right is blocked with the phospho peptide.

### Storage

-20°C for 1 year

501 Changsheng S Rd, Nanhu Dist, Jiaxing, Zhejiang, China

Tel: 86 21 31007137 | E-mail: [save@bt-laboratory.com](mailto:save@bt-laboratory.com) | [www.bt-laboratory.com](http://www.bt-laboratory.com)