

Nectin 2 Polyclonal Antibody

Description

| | |
|--------------------------------|--|
| Product type | Primary Antibody |
| Code | BT-AP05868 |
| Host | Rabbit |
| Isotype | IgG |
| Size | 20ul, 50ul, 100ul |
| Immunogen | Synthesized peptide derived from Poliovirus receptor-related protein 2 at AA range: 151-200 |
| Mol wt | 57742 |
| Species reactivity | Human |
| Clonality | Polyclonal |
| Recommended application | WB, ELISA |
| Concentration | 1 mg/ml |
| Full name | Nectin 2 Antibody |
| Synonyms | PVRL2; HVEB; PRR2; Poliovirus receptor-related protein 2; Herpes virus entry mediator B; Herpesvirus entry mediator B; HveB; Nectin-2; CD112 |

This product is for research use only, not for use in human, therapeutic or diagnostic procedure.

Background

NECTIN2 encodes a single-pass type I membrane glycoprotein with two Ig-like C2-type domains and an Ig-like V-type domain. Nectin cell adhesion molecule 2 is one of the plasma membrane components of adherens junctions. It also serves as an entry for certain mutant strains of herpes simplex virus and pseudorabies virus, and it is involved in cell to cell spreading of these viruses. Variations in this gene have been associated with differences in the severity of multiple sclerosis. Alternate transcriptional splice variants, encoding different isoforms, have been characterized.

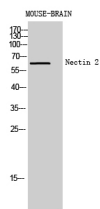
Recommended Dilution

WB: 1: 500 - 1: 2000

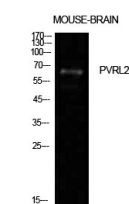
ELISA: 1: 10000

Not yet tested in other applications.

Images



Western Blot analysis of MOUSE-BRAIN cells using Nectin 2 Polyclonal Antibody diluted at 1:500. Secondary antibody was diluted at 1:20000



Western Blot analysis of mouse brain cells using Nectin 2 Polyclonal Antibody. Antibody was diluted at 1:500. Secondary antibody was diluted at 1:20000

Storage

-20°C for one year

501 Changsheng S Rd, Nanhu Dist, Jiaxing, Zhejiang, China

Tel: 86 21 31007137 | E-mail: save@bt-laboratory.com | www.bt-laboratory.com