

## NEDL2 Polyclonal Antibody

### Description

<b>Product type</b>	Primary Antibody
<b>Code</b>	BT-AP05873
<b>Host</b>	Rabbit
<b>Isotype</b>	IgG
<b>Size</b>	20ul, 50ul, 100ul
<b>Immunogen</b>	The antiserum was produced against synthesized peptide derived from human HECW2. AA range:481-530
<b>Mol wt</b>	175769
<b>Species reactivity</b>	Human
<b>Clonality</b>	Polyclonal
<b>Recommended application</b>	WB, ELISA
<b>Concentration</b>	1 mg/ml
<b>Full name</b>	NEDL2 Antibody
<b>Synonyms</b>	HECW2; KIAA1301; NEDL2; E3 ubiquitin-protein ligase HECW2; HECT; C2 and WW domain-containing protein 2; NEDD4-like E3 ubiquitin-protein ligase 2

**This product is for research use only, not for use in human, therapeutic or diagnostic procedure.**

### Background

HECW2 (HECT, C2 And WW Domain Containing E3 Ubiquitin Protein Ligase 2) is a Protein Coding gene. Among its related pathways are SMAD Signaling Network and Ubiquitin-Proteasome Dependent Proteolysis. GO annotations related to this gene include ligase activity and ubiquitin-protein transferase activity. An important paralog of this gene is AREL1.

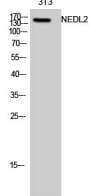
### Recommended Dilution

WB: 1: 500 - 1: 2000

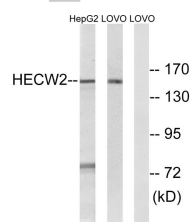
ELISA: 1: 10000

Not yet tested in other applications.

### Images



Western Blot analysis of 3T3 cells using NEDL2 Polyclonal Antibody diluted at 1:1000



Western blot analysis of lysates from LOVO and HepG2 cells, using HECW2 Antibody. The lane on the right is blocked with the synthesized peptide.

## Storage

-20°C for one year

501 Changsheng S Rd, Nanhu Dist, Jiaxing, Zhejiang, China

Tel: 86 21 31007137 | E-mail: [save@bt-laboratory.com](mailto:save@bt-laboratory.com) | [www.bt-laboratory.com](http://www.bt-laboratory.com)