

## NEEP21 Polyclonal Antibody

### Description

<b>Product type</b>	Primary Antibody
<b>Code</b>	BT-AP05874
<b>Host</b>	Rabbit
<b>Isotype</b>	IgG
<b>Size</b>	20ul, 50ul, 100ul
<b>Immunogen</b>	The antiserum was produced against synthesized peptide derived from human NSG1. AA range:112-161
<b>Mol wt</b>	20913
<b>Species reactivity</b>	Human, Mouse, Rat
<b>Clonality</b>	Polyclonal
<b>Recommended application</b>	WB, IHC-p, ELISA
<b>Concentration</b>	1 mg/ml
<b>Full name</b>	NEEP21 Antibody
<b>Synonyms</b>	NSG1; D4S234; Neuron-specific protein family member 1; Brain neuron cytoplasmic protein 1

**This product is for research use only, not for use in human, therapeutic or diagnostic procedure.**

### Background

NSG1 is a Protein Coding gene. Gene Ontology (GO) annotations related to this gene include clathrin light chain binding. An important paralog of this gene is HMP19.

### Recommended Dilution

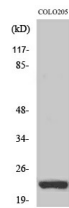
WB: 1: 500 - 1: 2000

IHC: 1: 100 - 1: 300

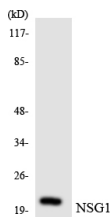
ELISA: 1: 20000

Not yet tested in other applications.

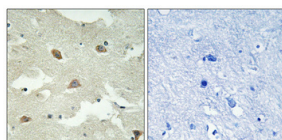
### Images



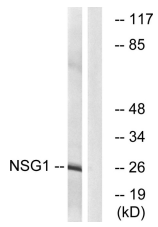
Western Blot analysis of various cells using NEEP21 Polyclonal Antibody diluted at 1:2000



Western blot analysis of the lysates from K562 cells using NSG1 antibody.



Immunohistochemical analysis of paraffin-embedded Human brain. Antibody was diluted at 1:100(4° overnight). High-pressure and temperature Tris-EDTA,pH8.0 was used for antigen retrieval. Negative contrl (right) obtained from antibody was pre-absorbed by immunogen peptide.



Western blot analysis of lysates from COLO cells, using NSG1 Antibody. The lane on the right is blocked with the synthesized peptide.

### Storage

-20°C for one year

501 Changsheng S Rd, Nanhu Dist, Jiaxing, Zhejiang, China

Tel: 86 21 31007137 | E-mail: [save@bt-laboratory.com](mailto:save@bt-laboratory.com) | [www.bt-laboratory.com](http://www.bt-laboratory.com)