

## NEGR1 Polyclonal Antibody

### Description

<b>Product type</b>	Primary Antibody
<b>Code</b>	BT-AP05875
<b>Host</b>	Rabbit
<b>Isotype</b>	IgG
<b>Size</b>	20ul, 50ul, 100ul
<b>Immunogen</b>	The antiserum was produced against synthesized peptide derived from human NEGR1. AA range:172-221
<b>Mol wt</b>	38719
<b>Species reactivity</b>	Human, Mouse, Rat
<b>Clonality</b>	Polyclonal
<b>Recommended application</b>	WB, ELISA
<b>Concentration</b>	1 mg/ml
<b>Full name</b>	NEGR1 Antibody
<b>Synonyms</b>	NEGR1; IGLON4; Neuronal growth regulator 1; IgLON family member 4

**This product is for research use only, not for use in human, therapeutic or diagnostic procedure.**

### Background

NEGR1 is a Protein Coding gene. Diseases associated with NEGR1 include podoconiosis. Among its related pathways are Cell adhesion molecules (CAMs). An important paralog of this gene is LSAMP. May be involved in cell-adhesion. May function as a trans-neural growth-promoting factor in regenerative axon sprouting in the mammalian brain.

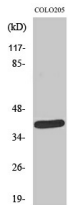
### Recommended Dilution

WB: 1: 500 - 1: 2000

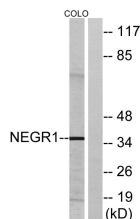
ELISA: 1: 20000

Not yet tested in other applications.

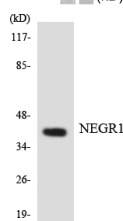
### Images



Western Blot analysis of various cells using NEGR1 Polyclonal Antibody



Western blot analysis of lysates from COLO cells, using NEGR1 Antibody. The lane on the right is blocked with the synthesized peptide.



Western blot analysis of the lysates from COLO205 cells using NEGR1 antibody.

## Storage

-20°C for one year

501 Changsheng S Rd, Nanhu Dist, Jiaxing, Zhejiang, China

Tel: 86 21 31007137 | E-mail: [save@bt-laboratory.com](mailto:save@bt-laboratory.com) | [www.bt-laboratory.com](http://www.bt-laboratory.com)