

A1AG2 Polyclonal Antibody

Description

Product type	Primary Antibody
Code	BT-AP05877
Host	Rabbit
Isotype	IgG
Size	20ul, 50ul, 100ul
Immunogen	Synthesized peptide derived from human protein . at AA range: 40-120
Mol wt	N/A
Species reactivity	Human, Rat, Mouse
Clonality	Polyclonal
Recommended application	WB, ELISA
Concentration	1 mg/ml
Full name	Alpha-1-acid glycoprotein 2
Synonyms	Alpha-1-acid glycoprotein 2 ;AGP 2;Orosomucoid-2;OMD 2

This product is for research use only, not for use in human, therapeutic or diagnostic procedure.

Background

This gene encodes a key acute phase plasma protein. Because of its increase due to acute inflammation| this protein is classified as an acute-phase reactant. The specific function of this protein has not yet been determined; however| it may be involved in aspects of immunosuppression.

Recommended Dilution

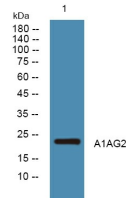
WB: 1: 500 - 1: 2000

ELISA: 1: 5000 - 1: 20000

ELISA: 1: 10000

Not yet tested in other applications.

Images



Western blot analysis of lysates from SH-SY5Y cells, primary antibody was diluted at 1:1000, 4°C overnight

Storage

-20°C for 1 year