

ARL16 Rabbit Polyclonal Antibody

Description

Product type	Primary Antibody
Code	BT-AP05880
Host	Rabbit
Isotype	IgG
Size	100ul, 50ul, 20ul
Immunogen	Synthesized peptide derived from human ARL16
Mol wt	21670
Species reactivity	Human, Rat, Mouse
Clonality	Polyclonal
Recommended application	WB
Concentration	1 mg/ml
Full name	ARL16
Synonyms	ARL16

This product is for research use only, not for use in human, therapeutic or diagnostic procedure.

Background

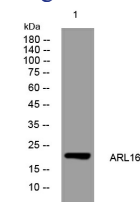
The protein encoded by this gene belongs to the ARL (ADP-ribosylation factor-like) family of proteins, which are structurally related to ADP-ribosylation factors (ARFs). This protein has been shown to have an inhibitory role in the cellular antiviral response. This gene product interacts with the C-terminal domain of the DEXD/H-box helicase 58 (DDX58) gene product. This interaction was found to suppress the association between the DDX58 gene product and RNA, thereby negatively regulating the activity of the DDX58 gene product.

Recommended Dilution

WB: 1: 500 - 1: 2000

Not yet tested in other applications.

Images



Western blot analysis of lysates from HEK293 cells, primary antibody was diluted at 1:1000, 4°C overnight

Storage

-20°C for 1 year