

Nek7 Polyclonal Antibody

Description

Product type	Primary Antibody
Code	BT-AP05886
Host	Rabbit
Isotype	IgG
Size	20ul, 50ul, 100ul
Immunogen	The antiserum was produced against synthesized peptide derived from human NEK7. AA range:101-150
Mol wt	34551
Species reactivity	Human, Mouse
Clonality	Polyclonal
Recommended application	WB, IHC-p, ELISA
Concentration	1 mg/ml
Full name	Nek7 Antibody
Synonyms	NEK7; Serine/threonine-protein kinase Nek7; Never in mitosis A-related kinase 7; NimA-related protein kinase 7

This product is for research use only, not for use in human, therapeutic or diagnostic procedure.

Background

NIMA-related kinases share high amino acid sequence identity with the gene product of the *Aspergillus nidulans* 'never in mitosis A' gene, which controls initiation of mitosis.

Recommended Dilution

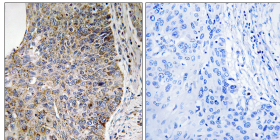
WB: 1: 500 - 1: 2000

IHC: 1: 100 - 1: 300

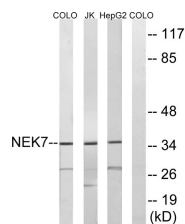
ELISA: 1: 40000

Not yet tested in other applications.

Images



Immunohistochemistry analysis of paraffin-embedded human lung carcinoma tissue, using NEK7 Antibody. The picture on the right is blocked with the synthesized peptide.



Western blot analysis of lysates from HepG2, Jurkat, and COLO cells, using NEK7 Antibody. The lane on the right is blocked with the synthesized peptide.

Storage

-20°C for one year