

Nephrin Polyclonal Antibody

Description

Product type	Primary Antibody
Code	BT-AP05888
Host	Rabbit
Isotype	IgG
Size	20ul, 50ul, 100ul
Immunogen	The antiserum was produced against synthesized peptide derived from human Nephrin. AA range:843-892
Mol wt	134742
Species reactivity	Human, Mouse, Rat
Clonality	Polyclonal
Recommended application	IHC-p, ELISA
Concentration	1 mg/ml
Full name	Nephrin Antibody
Synonyms	NPHS1; NPHN; Nephrin; Renal glomerulus-specific cell adhesion receptor

This product is for research use only, not for use in human, therapeutic or diagnostic procedure.

Background

NPHS1 encodes a member of the immunoglobulin family of cell adhesion molecules that functions in the glomerular filtration barrier in the kidney. NPHS1 is primarily expressed in renal tissues, and the protein is a type-1 transmembrane protein found at the slit diaphragm of glomerular podocytes. The slit diaphragm is thought to function as an ultrafilter to exclude albumin and other plasma macromolecules in the formation of urine. Mutations in this gene result in Finnish-type congenital nephrosis 1, characterized by severe proteinuria and loss of the slit diaphragm and foot processes.

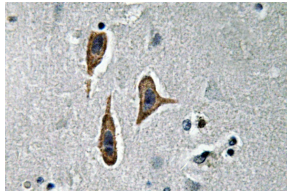
Recommended Dilution

IHC: 1: 100 - 1: 300

ELISA: 1: 40000

Not yet tested in other applications.

Images



Immunohistochemistry analysis of Nephrin antibody in paraffin-embedded human brain tissue.

Storage

-20°C for one year