

## Nephrocystin-5 Polyclonal Antibody

### Description

<b>Product type</b>	Primary Antibody
<b>Code</b>	BT-AP05890
<b>Host</b>	Rabbit
<b>Isotype</b>	IgG
<b>Size</b>	20ul, 50ul, 100ul
<b>Immunogen</b>	The antiserum was produced against synthesized peptide derived from human IQCB1. AA range:431-480
<b>Mol wt</b>	68929
<b>Species reactivity</b>	Human
<b>Clonality</b>	Polyclonal
<b>Recommended application</b>	WB, IHC-p, ELISA
<b>Concentration</b>	1 mg/ml
<b>Full name</b>	Nephrocystin-5 Antibody
<b>Synonyms</b>	IQCB1; KIAA0036; NPHP5; OK/SW-cl.85; IQ calmodulin-binding motif-containing protein 1; Nephrocystin-5; p53 and DNA damage-regulated IQ motif protein; PIQ

This product is for research use only, not for use in human, therapeutic or diagnostic procedure.

### Background

IQCB1 encodes a nephrocystin protein that interacts with calmodulin and the retinitis pigmentosa GTPase regulator protein. IQ calmodulin-binding motif-containing protein 1 has a central coiled-coil region and two calmodulin-binding IQ domains. It is localized to the primary cilia of renal epithelial cells and connecting cilia of photoreceptor cells. IQ calmodulin-binding motif-containing protein 1 is thought to play a role in ciliary function. Defects in this gene result in Senior-Loken syndrome type 5. Alternative splicing results in multiple transcript variants. A pseudogene of this gene is found on chromosome 6.

### Recommended Dilution

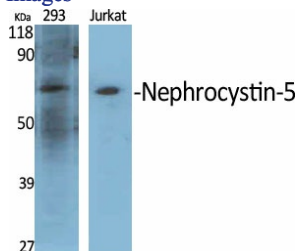
WB: 1: 500 - 1: 2000

IHC: 1: 100 - 1: 300

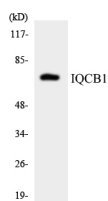
ELISA: 1: 40000

Not yet tested in other applications.

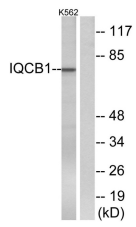
### Images



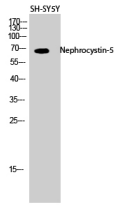
Western Blot analysis of various cells using Nephrocystin-5 Polyclonal Antibody diluted at 1:500



Western blot analysis of the lysates from HepG2 cells using IQCB1 antibody.



Western blot analysis of lysates from K562 cells, using IQCB1 Antibody. The lane on the right is blocked with the synthesized peptide.



Western Blot analysis of SH-SY5Y cells using Nephrocystin-5 Polyclonal Antibody diluted at 1:500

### Storage

-20°C for one year

501 Changsheng S Rd, Nanhu Dist, Jiaxing, Zhejiang, China

Tel: 86 21 31007137 | E-mail: [save@bt-laboratory.com](mailto:save@bt-laboratory.com) | [www.bt-laboratory.com](http://www.bt-laboratory.com)