

Nesprin-3 Polyclonal Antibody

Description

Product type	Primary Antibody
Code	BT-AP05891
Host	Rabbit
Isotype	IgG
Size	20ul, 50ul, 100ul
Immunogen	The antiserum was produced against synthesized peptide derived from human C14orf49. AA range:169-218
Mol wt	112216
Species reactivity	Human, Mouse
Clonality	Polyclonal
Recommended application	WB, IF, ELISA
Concentration	1 mg/ml
Full name	Nesprin-3 Antibody
Synonyms	SYNE3; C14orf49; Nesprin-3; Nuclear envelope spectrin repeat protein 3

This product is for research use only, not for use in human, therapeutic or diagnostic procedure.

Background

Component of SUN-protein-containing multivariate complexes also called LINC complexes which link the nucleoskeleton and cytoskeleton by providing versatile outer nuclear membrane attachment sites for cytoskeletal filaments. Involved in the maintenance of nuclear organization and structural integrity. Probable anchoring protein which tethers the nucleus to the cytoskeleton by binding PLEC which can associate with the intermediate filament system.

Recommended Dilution

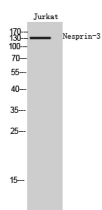
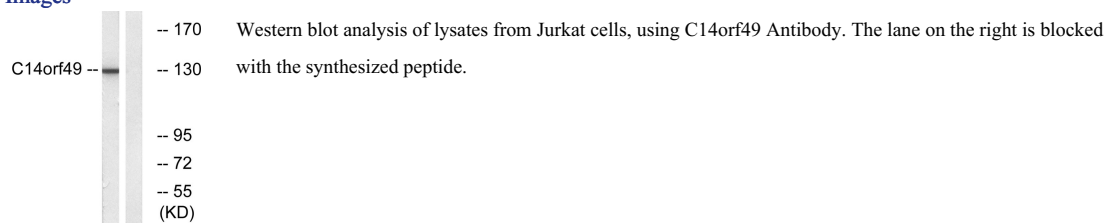
WB: 1: 500 - 1: 2000

IF: 1: 200 - 1: 1000

ELISA: 1: 40000

Not yet tested in other applications.

Images



Western Blot analysis of Jurkat cells using Nesprin-3 Polyclonal Antibody cells nucleus.

Storage

-20°C for one year

501 Changsheng S Rd, Nanhu Dist, Jiaxing, Zhejiang, China

Tel: 86 21 31007137 | E-mail: save@bt-laboratory.com | www.bt-laboratory.com