

ABC3A Polyclonal Antibody

Description

Product type	Primary Antibody
Code	BT-AP05897
Host	Rabbit
Isotype	IgG
Size	20ul, 50ul, 100ul
Immunogen	Synthesized peptide derived from human protein . at AA range: 80-160
Mol wt	N/A
Species reactivity	Human, Rat, Mouse
Clonality	Polyclonal
Recommended application	WB, ELISA
Concentration	1 mg/ml
Full name	Probable DNA dC->dU-editing enzyme APOBEC-3A
Synonyms	Probable DNA dC->dU-editing enzyme APOBEC-3A ;EC 3.5.4.-.;Phorbolin-1

This product is for research use only, not for use in human, therapeutic or diagnostic procedure.

Background

This gene is a member of the cytidine deaminase gene family. It is one of seven related genes or pseudogenes found in a cluster| thought to result from gene duplication| on chromosome 22. Members of the cluster encode proteins that are structurally and functionally related to the C to U RNA-editing cytidine deaminase APOBEC1. The protein encoded by this gene lacks the zinc binding activity of other family members. The protein plays a role in immunity| by restricting transmission of foreign DNA such as viruses. One mechanism of foreign DNA restriction is deamination of foreign double-stranded DNA cytidines to uridines| which leads to DNA degradation. However| other mechanisms are also thought to be involved| as anti-viral effect is not dependent on deaminase activity. Two transcript variants encoding different isoforms have been found for this gene.

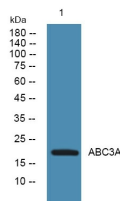
Recommended Dilution

WB: 1: 500 - 1: 2000

ELISA: 1: 5000 - 1: 20000

Not yet tested in other applications.

Images



Western blot analysis of lysates from K562 cells, primary antibody was diluted at 1:1000, 4°C overnight

Storage

-20°C for 1 year