

Netrin-1 Polyclonal Antibody

Description

Product type	Primary Antibody
Code	BT-AP05898
Host	Rabbit
Isotype	IgG
Size	20ul, 50ul, 100ul
Immunogen	The antiserum was produced against synthesized peptide derived from human Netrin-1. AA range:484-533
Mol wt	67734
Species reactivity	Human, Mouse, Rat, Monkey
Clonality	Polyclonal
Recommended application	WB, IHC-p, ELISA
Concentration	1 mg/ml
Full name	Netrin-1 Antibody
Synonyms	NTN1; NTN1L; Netrin-1; Epididymis tissue protein Li 131P

This product is for research use only, not for use in human, therapeutic or diagnostic procedure.

Background

Netrin is included in a family of laminin-related secreted proteins. The function of NTN1 has not yet been defined; however, netrin is thought to be involved in axon guidance and cell migration during development. Mutations and loss of expression of netrin suggest that variation in netrin may be involved in cancer development.

Recommended Dilution

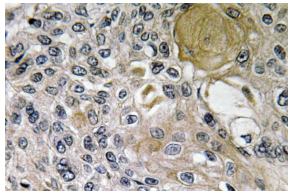
WB: 1: 500 - 1: 2000

IHC: 1: 100 - 1: 300

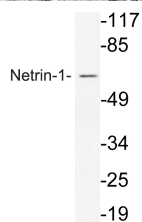
ELISA: 1: 40000

Not yet tested in other applications.

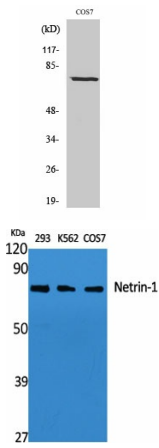
Images



Immunohistochemistry analysis of Netrin-1 antibody in paraffin-embedded human lung carcinoma tissue.



Western blot analysis of lysate from COS7 cells, using Netrin-1 antibody.



Western Blot analysis of COS7 cells using Netrin-1 Polyclonal Antibody diluted at 1:1000

Western Blot analysis of various cells using Netrin-1 Polyclonal Antibody diluted at 1:1000

Storage

-20°C for one year

501 Changsheng S Rd, Nanhu Dist, Jiaxing, Zhejiang, China

Tel: 86 21 31007137 | E-mail: save@bt-laboratory.com | www.bt-laboratory.com