

Neuregulin-1 Polyclonal Antibody

Description

Product type	Primary Antibody
Code	BT-AP05913
Host	Rabbit
Isotype	IgG
Size	20ul, 50ul, 100ul
Immunogen	The antiserum was produced against synthesized peptide derived from the Internal region of human NRG1. AA range:201-250
Mol wt	70392
Species reactivity	Human, Mouse, Rat
Clonality	Polyclonal
Recommended application	WB, IHC-p, ELISA
Concentration	1 mg/ml
Full name	Neuregulin-1 Antibody
Synonyms	NRG1; GGF; HGL; HRGA; NDF; SMDF; Pro-neuregulin-1, membrane-bound isoform; Pro-NRG1

This product is for research use only, not for use in human, therapeutic or diagnostic procedure.

Background

Pro-neuregulin-1, membrane-bound isoform encoded by NRG1 is a membrane glycoprotein that mediates cell-cell signaling and plays a critical role in the growth and development of multiple organ systems. An extraordinary variety of different isoforms are produced from this gene through alternative promoter usage and splicing. These isoforms are expressed in a tissue-specific manner and differ significantly in their structure, and are classified as types I, II, III, IV, V and VI. Dysregulation of this gene has been linked to diseases such as cancer, schizophrenia, and bipolar disorder (BPD).

Recommended Dilution

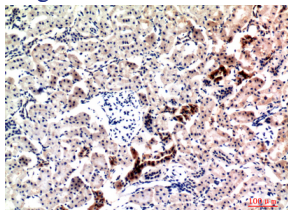
WB: 1: 500 - 1: 2000

IHC-p: 1: 100 - 1: 300

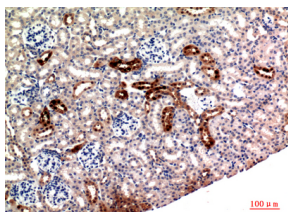
ELISA: 1: 20000

Not yet tested in other applications.

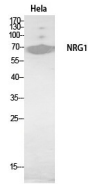
Images



Immunohistochemical analysis of paraffin-embedded rat-kidney, antibody was diluted at 1:100



Immunohistochemical analysis of paraffin-embedded rat-kidney, antibody was diluted at 1:100



Western Blot analysis of HeLa, HBE cells using Neuregulin-1 Polyclonal Antibody. Secondary antibody was diluted at 1:20000 cells nucleus.

Storage

-20°C for one year

501 Changsheng S Rd, Nanhu Dist, Jiaxing, Zhejiang, China

Tel: 86 21 31007137 | E-mail: save@bt-laboratory.com | www.bt-laboratory.com