

Neurexin IIIBeta Polyclonal Antibody

Description

Product type	Primary Antibody
Code	BT-AP05919
Host	Rabbit
Isotype	IgG
Size	20ul, 50ul, 100ul
Immunogen	Synthesized peptide derived from Neurexin III β . at AA range: 30-110
Mol wt	69406
Species reactivity	Human
Clonality	Polyclonal
Recommended application	WB, ELISA
Concentration	1 mg/ml
Full name	Neurexin IIIBeta Antibody
Synonyms	NRXN3; KIAA0743; Neurexin-3-beta; Neurexin III-beta

This product is for research use only, not for use in human, therapeutic or diagnostic procedure.

Background

NRXN3 (neurexin 3) encodes a member of a family of proteins that function in the nervous system as receptors and cell adhesion molecules. Extensive alternative splicing and the use of alternative promoters results in multiple transcript variants and protein isoforms for this gene, but the full-length nature of many of these variants has not been determined. Transcripts that initiate from an upstream promoter encode alpha isoforms, which contain epidermal growth factor-like (EGF-like) sequences and laminin G domains. Transcripts initiating from the downstream promoter encode beta isoforms, which lack EGF-like sequences. Genetic variation at this locus has been associated with a range of behavioral phenotypes, including alcohol dependence and autism spectrum disorder.

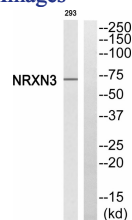
Recommended Dilution

WB: 1: 500 - 1: 2000

ELISA: 1: 20000

Not yet tested in other applications.

Images



Western blot analysis of NRXN3 Antibody. The lane on the right is blocked with the NRXN3 peptide.

Storage

-20°C for one year