

Neurexophilin-1 Polyclonal Antibody

Description

Product type	Primary Antibody
Code	BT-AP05920
Host	Rabbit
Isotype	IgG
Size	20ul, 50ul, 100ul
Immunogen	The antiserum was produced against synthesized peptide derived from human NXP1. AA range:77-126
Mol wt	31082
Species reactivity	Human, Mouse, Rat
Clonality	Polyclonal
Recommended application	WB, IHC-p, ELISA
Concentration	1 mg/ml
Full name	Neurexophilin-1 Antibody
Synonyms	NXP1; NPH1; Nbla00697; Neurexophilin-1

This product is for research use only, not for use in human, therapeutic or diagnostic procedure.

Background

NXP1 is a member of the neurexophilin family and encodes neurexophilin 1 with a variable N-terminal domain, a highly conserved, N-glycosylated central domain, a short linker region, and a cysteine-rich C-terminal domain. This protein forms a very tight complex with alpha neurexins, a group of proteins that promote adhesion between dendrites and axons.

Recommended Dilution

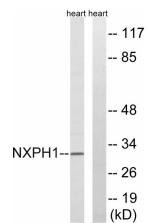
WB: 1: 500 - 1: 2000

IHC: 1: 100 - 1: 300

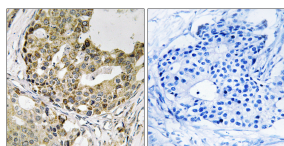
ELISA: 1: 20000

Not yet tested in other applications.

Images



Western blot analysis of lysates from rat heart cells, using NXP1 Antibody. The lane on the right is blocked with the synthesized peptide.



Immunohistochemistry analysis of paraffin-embedded human breast carcinoma tissue, using NXP1 Antibody. The picture on the right is blocked with the synthesized peptide.

Storage

-20°C for one year