

## Neurexophilin-3 Polyclonal Antibody

### Description

<b>Product type</b>	Primary Antibody
<b>Code</b>	BT-AP05921
<b>Host</b>	Rabbit
<b>Isotype</b>	IgG
<b>Size</b>	20ul, 50ul, 100ul
<b>Immunogen</b>	The antiserum was produced against synthesized peptide derived from human NXPH3. AA range:158-207
<b>Mol wt</b>	28127
<b>Species reactivity</b>	Human, Mouse, Rat
<b>Clonality</b>	Polyclonal
<b>Recommended application</b>	WB, IHC-p, ELISA
<b>Concentration</b>	1 mg/ml
<b>Full name</b>	Neurexophilin-3 Antibody
<b>Synonyms</b>	NXPH3; KIAA1159; NPH3; Neurexophilin-3

**This product is for research use only, not for use in human, therapeutic or diagnostic procedure.**

### Background

NXPH3 is a Protein Coding gene. Neurexophilin-3 may be signaling molecules that resemble neuropeptides. Ligand for alpha-neurexins Gene Ontology (GO) annotations related to this gene include receptor binding. An important paralog of this gene is NXPH4.

### Recommended Dilution

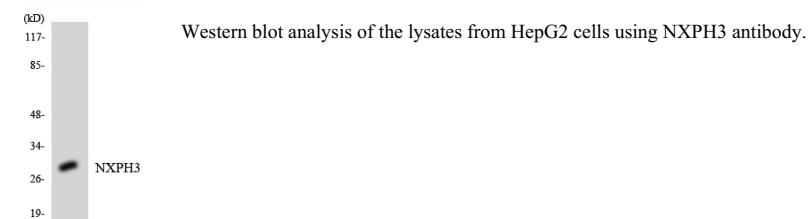
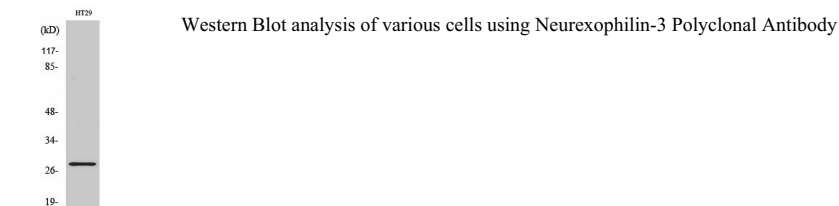
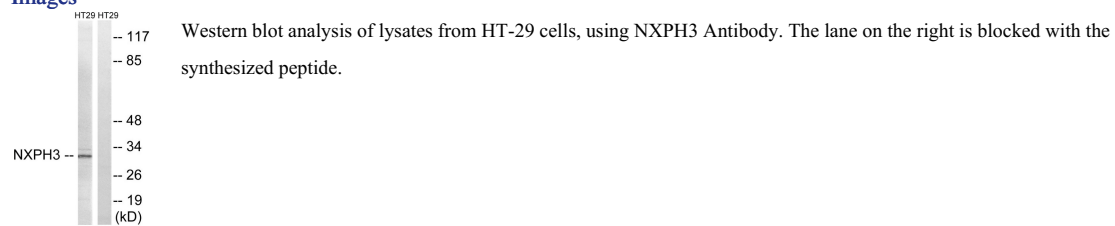
WB: 1: 500 - 1: 2000

IHC: 1: 100 - 1: 300

ELISA: 1: 10000

Not yet tested in other applications.

### Images



## Storage

-20°C for one year

501 Changsheng S Rd, Nanhu Dist, Jiaxing, Zhejiang, China

Tel: 86 21 31007137 | E-mail: [save@bt-laboratory.com](mailto:save@bt-laboratory.com) | [www.bt-laboratory.com](http://www.bt-laboratory.com)