

Neurofibromin Polyclonal Antibody

Description

Product type	Primary Antibody
Code	BT-AP05927
Host	Rabbit
Isotype	IgG
Size	20ul, 50ul, 100ul
Immunogen	The antiserum was produced against synthesized peptide derived from human NF1. AA range:1551-1600
Mol wt	319372
Species reactivity	Human, Mouse, Rat
Clonality	Polyclonal
Recommended application	WB, IF, ELISA
Concentration	1 mg/ml
Full name	Neurofibromin Antibody
Synonyms	NF1; Neurofibromin; Neurofibromatosis-related protein NF-1

This product is for research use only, not for use in human, therapeutic or diagnostic procedure.

Background

NF1 product appears to function as a negative regulator of the ras signal transduction pathway. Mutations in this gene have been linked to neurofibromatosis type 1, juvenile myelomonocytic leukemia and Watson syndrome. The mRNA for this gene is subject to RNA editing (CGA>UGA->Arg1306Term) resulting in premature translation termination. Alternatively spliced transcript variants encoding different isoforms have also been described for this gene.

Recommended Dilution

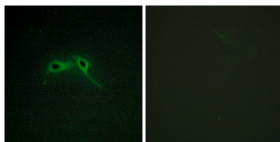
WB: 1: 500 - 1: 2000

IF: 1: 200 - 1: 1000

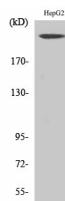
ELISA: 1: 20000

Not yet tested in other applications.

Images



Immunofluorescence analysis of HepG2 cells, using NF1 Antibody. The picture on the right is blocked with the synthesized peptide.



Western Blot analysis of HepG2 cells using Neurofibromin Polyclonal Antibody



Western Blot analysis of various cells using Neurofibromin Polyclonal Antibody



Western blot analysis of lysates from HepG2 cells, using NF1 Antibody. The lane on the right is blocked with the synthesized peptide.

Storage

-20°C for one year

501 Changsheng S Rd, Nanhu Dist, Jiaxing, Zhejiang, China

Tel: 86 21 31007137 | E-mail: save@bt-laboratory.com | www.bt-laboratory.com