

Neuromedin-S Polyclonal Antibody

Description

Product type	Primary Antibody
Code	BT-AP05929
Host	Rabbit
Isotype	IgG
Size	20ul, 50ul, 100ul
Immunogen	The antiserum was produced against synthesized peptide derived from human NMS. AA range:104-153
Mol wt	17731
Species reactivity	Human
Clonality	Polyclonal
Recommended application	WB, IHC-p, ELISA
Concentration	1 mg/ml
Full name	Neuromedin-S Antibody
Synonyms	NMS; Neuromedin-S

This product is for research use only, not for use in human, therapeutic or diagnostic procedure.

Background

NMS encodes a member of the neuromedin family of neuropeptides. The encoded preproprotein is proteolytically processed to generate a biologically active neuropeptide that plays a role in the regulation of circadian rhythm, anorexigenic action, antidiuretic action, cardiovascular function and stimulation of oxytocin and vasopressin release.

Recommended Dilution

WB: 1: 500 - 1: 2000

IHC: 1: 100 - 1: 300

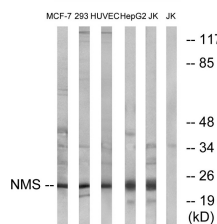
ELISA: 1: 40000

Not yet tested in other applications.

Images



Western Blot analysis of various cells using Neuromedin-S Polyclonal Antibody diluted at 1:1000



Western blot analysis of lysates from Jurkat, HepG2, HUVEC, 293, and MCF-7 cells, using NMS Antibody.

The lane on the right is blocked with the synthesized peptide.

Storage

-20°C for one year

501 Changsheng S Rd, Nanhu Dist, Jiaxing, Zhejiang, China

Tel: 86 21 31007137 | E-mail: save@bt-laboratory.com | www.bt-laboratory.com