

Neuronal PAS1 Polyclonal Antibody

Description

Product type	Primary Antibody
Code	BT-AP05933
Host	Rabbit
Isotype	IgG
Size	20ul, 50ul, 100ul
Immunogen	The antiserum was produced against synthesized peptide derived from human NPAS1. AA range:445-494
Mol wt	62702
Species reactivity	Human
Clonality	Polyclonal
Recommended application	WB, ELISA
Concentration	1 mg/ml
Full name	Neuronal PAS1 Antibody
Synonyms	NPAS1; BHLHE11; MOP5; PASD5; Neuronal PAS domain-containing protein 1; Neuronal PAS1; Basic-helix-loop-helix-PAS protein MOP5; Class E basic helix-loop-helix protein 11; bHLHe11; Member of PAS protein

This product is for research use only, not for use in human, therapeutic or diagnostic procedure.

Background

The protein encoded by NPAS1 is a member of the basic helix-loop-helix (bHLH)-PAS family of transcription factors. Studies of a related mouse gene suggest that it functions in neurons. The exact function of NPAS1 is unclear, but it may play protective or modulatory roles during late embryogenesis and postnatal development.

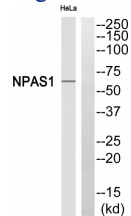
Recommended Dilution

WB: 1: 500 - 1: 2000

ELISA: 1: 40000

Not yet tested in other applications.

Images



Western blot analysis of NPAS1 Antibody. The lane on the right is blocked with the NPAS1 peptide.

Storage

-20°C for one year