

Neuropilin-2 Polyclonal Antibody

Description

Product type	Primary Antibody
Code	BT-AP05938
Host	Rabbit
Isotype	IgG
Size	20ul, 50ul, 100ul
Immunogen	The antiserum was produced against synthesized peptide derived from the Internal region of human NRP2. AA range:791-840
Mol wt	102410
Species reactivity	Human, Mouse, Rat
Clonality	Polyclonal
Recommended application	WB, IHC-p, ELISA
Concentration	1 mg/ml
Full name	Neuropilin-2 Antibody
Synonyms	NRP2; VEGF165R2; Neuropilin-2; Vascular endothelial cell growth factor 165 receptor 2

This product is for research use only, not for use in human, therapeutic or diagnostic procedure.

Background

NRP2 encodes a member of the neuropilin family of receptor proteins. The encoded transmembrane protein binds to SEMA3C protein {sema domain, immunoglobulin domain (Ig), short basic domain, secreted, (semaphorin) 3C} and SEMA3F protein {sema domain, immunoglobulin domain (Ig), short basic domain, secreted, (semaphorin) 3F}, and interacts with vascular endothelial growth factor (VEGF). This protein may play a role in cardiovascular development, axon guidance, and tumorigenesis. Multiple transcript variants encoding distinct isoforms have been identified for this gene.

Recommended Dilution

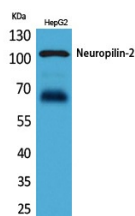
WB: 1: 500 - 1: 2000

IHC-p: 1: 100 - 300

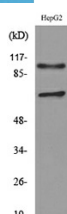
ELISA: 1: 20000

Not yet tested in other applications.

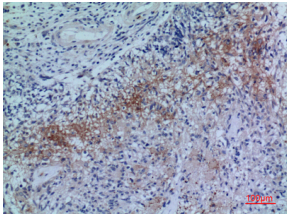
Images



Western Blot analysis of HepG2 cells using Neuropilin-2 Polyclonal Antibody. Secondary antibody was diluted at 1:20000



Western blot analysis of lysate from HepG2 cells, using NRP2 Antibody.



Immunohistochemical analysis of paraffin-embedded human-brain, antibody was diluted at 1:100

Storage

-20°C for one year

501 Changsheng S Rd, Nanhu Dist, Jiaxing, Zhejiang, China

Tel: 86 21 31007137 | E-mail: save@bt-laboratory.com | www.bt-laboratory.com