

Neuroplastin Polyclonal Antibody

Description

Product type	Primary Antibody
Code	BT-AP05939
Host	Rabbit
Isotype	IgG
Size	20ul, 50ul, 100ul
Immunogen	The antiserum was produced against synthesized peptide derived from human NPTN. AA range:106-155
Mol wt	31291
Species reactivity	Human, Mouse, Rat
Clonality	Polyclonal
Recommended application	IHC-p, ELISA
Concentration	1 mg/ml
Full name	Neuroplastin Antibody
Synonyms	NPTN; SDFR1; SDR1; Neuroplastin; Stromal cell-derived receptor 1; SDR-1

This product is for research use only, not for use in human, therapeutic or diagnostic procedure.

Background

NPTN encodes a type I transmembrane protein belonging to the Ig superfamily. The neuroplastin is believed to be involved in cell-cell interactions or cell-substrate interactions. Alternative splicing results in multiple transcript variants.

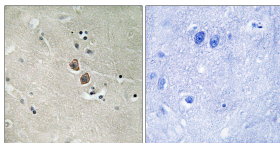
Recommended Dilution

IHC: 1: 100 - 1: 300

ELISA: 1: 5000

Not yet tested in other applications.

Images



Immunohistochemistry analysis of paraffin-embedded human brain tissue, using NPTN Antibody. The picture on the right is blocked with the synthesized peptide.

Storage

-20°C for one year

501 Changsheng S Rd, Nanhu Dist, Jiaxing, Zhejiang, China

Tel: 86 21 31007137 | E-mail: save@bt-laboratory.com | www.bt-laboratory.com