

Neuropsin Polyclonal Antibody

Description

Product type	Primary Antibody
Code	BT-AP05940
Host	Rabbit
Isotype	IgG
Size	20ul, 50ul, 100ul
Immunogen	The antiserum was produced against synthesized peptide derived from human OPN5. AA range:251-300
Mol wt	39727
Species reactivity	Human, Mouse
Clonality	Polyclonal
Recommended application	WB, IF, ELISA
Concentration	1 mg/ml
Full name	Neuropsin Antibody
Synonyms	OPN5; GPR136; PGR12; TMEM13; Opsin-5; G-protein coupled receptor 136; G-protein coupled receptor PGR12; Neuropsin; Transmembrane protein 13

This product is for research use only, not for use in human, therapeutic or diagnostic procedure.

Background

Opsins are members of the guanine nucleotide-binding protein (G protein)-coupled receptor superfamily. OPN5 is expressed in the eye, brain, testes, and spinal cord. This gene belongs to the seven-exon subfamily of mammalian opsin genes that includes peropsin (RRH) and retinal G protein coupled receptor (RGR). Like these other seven-exon opsin genes, this family member may encode a protein with photoisomerase activity. Alternative splicing results in multiple transcript variants.

Recommended Dilution

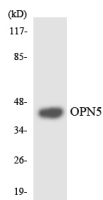
WB: 1: 500 - 1: 2000

IF: 1: 200 - 1: 1000

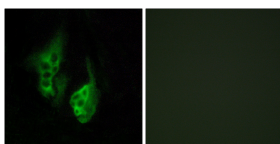
ELISA: 1: 5000

Not yet tested in other applications.

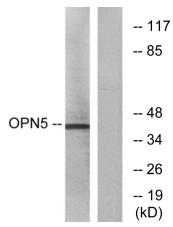
Images



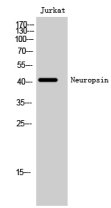
Western blot analysis of the lysates from HUVEC cells using OPN5 antibody.



Immunofluorescence analysis of HeLa cells, using OPN5 Antibody. The picture on the right is blocked with the synthesized peptide.



Western blot analysis of lysates from Jurkat cells, using OPN5 Antibody. The lane on the right is blocked with the synthesized peptide.



Western Blot analysis of Jurkat cells using Neuropilin Polyclonal Antibody

Storage

-20°C for one year

501 Changsheng S Rd, Nanhu Dist, Jiaxing, Zhejiang, China

Tel: 86 21 31007137 | E-mail: save@bt-laboratory.com | www.bt-laboratory.com