

Neurotensin Polyclonal Antibody

Description

Product type	Primary Antibody
Code	BT-AP05941
Host	Rabbit
Isotype	IgG
Size	20ul, 50ul, 100ul
Immunogen	The antiserum was produced against synthesized peptide derived from the C-terminal region of human NTS. AA range:121-170
Mol wt	19795
Species reactivity	Human, Mouse, Rat
Clonality	Polyclonal
Recommended application	WB, ELISA
Concentration	1 mg/ml
Full name	Neurotensin Antibody
Synonyms	NTS; Neurotensin/neuromedin N

This product is for research use only, not for use in human, therapeutic or diagnostic procedure.

Background

NTS encodes a common precursor for two peptides, neuromedin N and neurotensin. Neurotensin is a secreted tridecapeptide, which is widely distributed throughout the central nervous system, and may function as a neurotransmitter or a neuromodulator. It may be involved in dopamine-associated pathophysiological events, in the maintenance of gut structure and function, and in the regulation of fat metabolism. Neurotensin also exhibits antimicrobial activity against bacteria and fungi. Tissue-specific processing may lead to the formation in some tissues of larger forms of neuromedin N and neurotensin. The large forms may represent more stable peptides that are also biologically active.

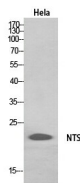
Recommended Dilution

WB: 1: 500 - 1: 2000

ELISA: 1: 20000

Not yet tested in other applications.

Images



Western Blot analysis of HeLa, HepG2 cells using Neurotensin Polyclonal Antibody. Secondary antibody was diluted at 1:20000

Storage

-20°C for one year