

Neurotrimin Polyclonal Antibody

Description

Product type	Primary Antibody
Code	BT-AP05942
Host	Rabbit
Isotype	IgG
Size	20ul, 50ul, 100ul
Immunogen	The antiserum was produced against synthesized peptide derived from human NT. AA range:235-284
Mol wt	37971
Species reactivity	Human
Clonality	Polyclonal
Recommended application	WB, IHC-p, ELISA
Concentration	1 mg/ml
Full name	Neurotrimin Antibody
Synonyms	NTM; IGLON2; NT; Neurotrimin; hNT; IGLON family member 2

This product is for research use only, not for use in human, therapeutic or diagnostic procedure.

Background

NTM encodes a member of the IgLON (LAMP, OBCAM, Ntm) family of immunoglobulin (Ig) domain-containing glycosylphosphatidylinositol (GPI)-anchored cell adhesion molecules. The encoded protein may promote neurite outgrowth and adhesion via a homophilic mechanism. Neurotrimin is closely linked to a related family member, opioid binding protein/cell adhesion molecule-like (OPCML), on chromosome 11. Multiple transcript variants encoding different isoforms have been found for this gene.

Recommended Dilution

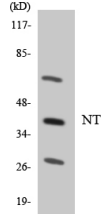
WB: 1: 500 - 1: 2000

IHC: 1: 100 - 1: 300

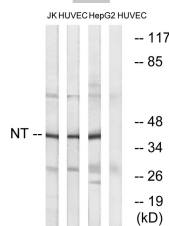
ELISA: 1: 20000

Not yet tested in other applications.

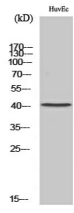
Images



Western blot analysis of the lysates from HepG2 cells using NT antibody.



Western blot analysis of lysates from HUVEC, HepG2, and Jurkat cells, using NT Antibody. The lane on the right is blocked with the synthesized peptide.



Western Blot analysis of various cells using Neurotrimin Polyclonal Antibody

Storage

-20°C for one year

501 Changsheng S Rd, Nanhu Dist, Jiaxing, Zhejiang, China

Tel: 86 21 31007137 | E-mail: save@bt-laboratory.com | www.bt-laboratory.com