

Ab1(Phospho Thr735) Polyclonal Antibody

Description

Product type	Primary Antibody
Code	BT-AP05949
Host	Rabbit
Isotype	IgG
Size	20ul, 50ul, 100ul
Immunogen	The antiserum was produced against synthesized peptide derived from human ABL1 around the phosphorylation site of Thr735. AA range:701-750
Mol wt	122873
Species reactivity	Human, Mouse, Rat, Monkey
Clonality	Polyclonal
Recommended application	WB, IHC-p, IF, ELISA
Concentration	1 mg/ml
Full name	Tyrosine-protein kinase ABL1
Synonyms	Tyrosine-protein kinase ABL1; ABL1; ABL; JTK7; Tyrosine-protein kinase ABL1; Abelson murine leukemia viral oncogene homolog 1; Abelson tyrosine-protein kinase 1; Proto-oncogene c-Abl; p150

This product is for research use only, not for use in human, therapeutic or diagnostic procedure.

Background

This gene is a protooncogene that encodes a protein tyrosine kinase involved in a variety of cellular processes| including cell division| adhesion| differentiation| and response to stress. The activity of the protein is negatively regulated by its SH3 domain| whereby deletion of the region encoding this domain results in an oncogene. The ubiquitously expressed protein has DNA-binding activity that is regulated by CDC2-mediated phosphorylation| suggesting a cell cycle function. This gene has been found fused to a variety of translocation partner genes in various leukemias| most notably the t(9;22) translocation that results in a fusion with the 5' end of the breakpoint cluster region gene (BCR; MIM:151410). Alternative splicing of this gene results in two transcript variants| which contain alternative first exons that are spliced to the remaining common exons.

Recommended Dilution

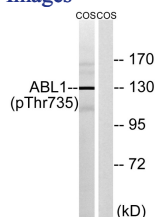
WB: 1: 500 - 1: 2000

IHC-p: 1: 100 - 1: 300

ELISA: 1: 5000

Not yet tested in other applications.

Images



Western blot analysis of lysates from COS7 cells treated with EGF 200ng/ml 30', using ABL1 (Phospho-Thr735) Antibody. The lane on the right is blocked with the phospho peptide.

Storage

-20°C for 1 year

501 Changsheng S Rd, Nanhu Dist, Jiaxing, Zhejiang, China

Tel: 86 21 31007137 | E-mail: save@bt-laboratory.com | www.bt-laboratory.com