

Dok-1(Phospho Tyr398) Polyclonal Antibody

Description

Product type	Primary Antibody
Code	BT-AP05951
Host	Rabbit
Isotype	IgG
Size	100ul, 50ul, 20ul
Immunogen	The antiserum was produced against synthesized peptide derived from human p62 Dok around the phosphorylation site of Tyr398. AA range:365-414
Mol wt	52392
Species reactivity	Human, Mouse, Rat
Clonality	Polyclonal
Recommended application	WB, ELISA
Concentration	1 mg/ml
Full name	Docking protein 1
Synonyms	Docking protein 1; DOK1; Docking protein 1; Downstream of tyrosine kinase 1; p62(dok; pp62

This product is for research use only, not for use in human, therapeutic or diagnostic procedure.

Background

The protein encoded by this gene is part of a signal transduction pathway downstream of receptor tyrosine kinases. The encoded protein is a scaffold protein that helps form a platform for the assembly of multiprotein signaling complexes. Several transcript variants encoding different isoforms have been found for this gene.

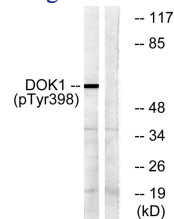
Recommended Dilution

WB: 1: 500 - 1: 2000

ELISA: 1: 20000

Not yet tested in other applications.

Images



Western blot analysis of lysates from K562 cells treated with Starvation 24h, using p62 Dok (Phospho-Tyr398) Antibody. The lane on the right is blocked with the phospho peptide.

Storage

-20°C for 1 year