

NF-E4 (Acetyl Lys43) Polyclonal Antibody

Description

Product type	Primary Antibody
Code	BT-AP05959
Host	Rabbit
Isotype	IgG
Size	20ul, 50ul, 100ul
Immunogen	Synthesized acetyl-peptide derived from the human NF-E4 around the acetylation site of K43.
Mol wt	19019
Species reactivity	Human
Clonality	Polyclonal
Recommended application	WB, ELISA
Concentration	1 mg/ml
Full name	NF-E4 (Acetyl Lys43) Antibody
Synonyms	NFE4; Transcription factor NF-E4

This product is for research use only, not for use in human, therapeutic or diagnostic procedure.

Background

The erythroid-specific protein encoded by NFE4, and the ubiquitous transcription factor CP2, form the stage selector protein(SSP) complex, which is involved in preferential expression of the gamma-globin genes in fetal erythroid cells. Alternate use of an in-frame upstream non-AUG(CUG) translation initiation codon, and a downstream AUG codon, results in two isoforms. While the long isoform(22 kDa) acts as an activator, the short isoform(14 kDa) has been shown to repress gamma-globin gene expression. NFE4 is located in an intron of the FBXL13 gene on the opposite strand.

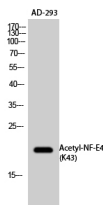
Recommended Dilution

WB: 1: 500 - 1: 2000

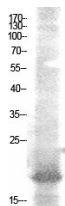
ELISA: 1: 20000

Not yet tested in other applications.

Images



Western Blot analysis of AD-293 cells using Acetyl-NF-E4 (K43) Polyclonal Antibody. Secondary antibody was diluted at 1:20000



Western Blot analysis of AD-293 cells using Acetyl-NF-E4 (K43) Polyclonal Antibody. Secondary antibody was diluted at 1:20000

Storage

-20°C for one year

501 Changsheng S Rd, Nanhu Dist, Jiaxing, Zhejiang, China

Tel: 86 21 31007137 | E-mail: save@bt-laboratory.com | www.bt-laboratory.com