

NF-L Polyclonal Antibody

Description

Product type	Primary Antibody
Code	BT-AP05964
Host	Rabbit
Isotype	IgG
Size	20ul, 50ul, 100ul
Immunogen	The antiserum was produced against synthesized peptide derived from human NF-L. AA range:295-344
Mol wt	61517
Species reactivity	Human, Mouse, Rat
Clonality	Polyclonal
Recommended application	IHC-p, WB, ELISA
Concentration	1 mg/ml
Full name	NF-L Antibody
Synonyms	NEFL; NF68; NFL; Neurofilament light polypeptide; NF-L; 68 kDa neurofilament protein; Neurofilament triplet L protein

This product is for research use only, not for use in human, therapeutic or diagnostic procedure.

Background

Neurofilaments are type IV intermediate filament heteropolymers composed of light, medium, and heavy chains. Neurofilaments comprise the axoskeleton and they functionally maintain the neuronal caliber. They may also play a role in intracellular transport to axons and dendrites. This gene encodes the light chain neurofilament protein. Mutations in this gene cause Charcot-Marie-Tooth disease types 1F (CMT1F) and 2E (CMT2E), disorders of the peripheral nervous system that are characterized by distinct neuropathies. A pseudogene has been identified on chromosome Y.

Recommended Dilution

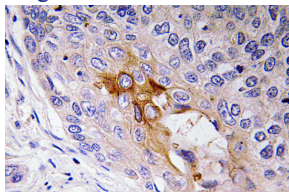
WB: 1: 500 - 2000

ELISA: 1: 40000

IHC: 1: 100 - 1: 300

Not yet tested in other applications.

Images



Immunohistochemistry analysis of NF-L antibody in paraffin-embedded human lung carcinoma tissue.

Storage

-20°C for one year