

NFRKappaB Polyclonal Antibody

Description

Product type	Primary Antibody
Code	BT-AP05967
Host	Rabbit
Isotype	IgG
Size	20ul, 50ul, 100ul
Immunogen	The antiserum was produced against synthesized peptide derived from human NFRKB. AA range:463-512
Mol wt	139001
Species reactivity	Human, Mouse, Monkey
Clonality	Polyclonal
Recommended application	WB, ELISA
Concentration	1 mg/ml
Full name	NFRkappaB Antibody
Synonyms	NFRKB; INO80G; Nuclear factor related to kappa-B-binding protein; DNA-binding protein R kappa-B; INO80 complex subunit G

This product is for research use only, not for use in human, therapeutic or diagnostic procedure.

Background

NFRKB (Nuclear Factor Related To KappaB Binding Protein) is a Protein Coding gene. Among its related pathways are DNA Double-Strand Break Repair and Transcription-Coupled Nucleotide Excision Repair (TC-NER). Gene Ontology (GO) annotations related to NFRKB include protease binding.

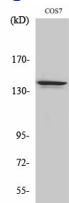
Recommended Dilution

WB: 1: 500 - 1: 2000

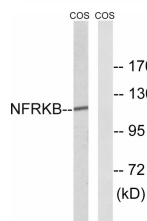
ELISA: 1: 40000

Not yet tested in other applications.

Images

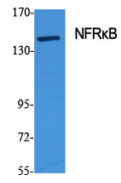


Western Blot analysis of COS7 cells using NFRKB Polyclonal Antibody diluted at 1:500 cells nucleus.



Western blot analysis of lysates from COS7 cells, using NFRKB Antibody. The lane on the right is blocked with the synthesized peptide.

(kD)



Western Blot analysis of various cells using NFRκB Polyclonal Antibody diluted at 1:500 cells nucleus.

Storage

-20°C for one year

501 Changsheng S Rd, Nanhu Dist, Jiaxing, Zhejiang, China

Tel: 86 21 31007137 | E-mail: save@bt-laboratory.com | www.bt-laboratory.com