

NFKappaB-p100 Polyclonal Antibody

Description

Product type	Primary Antibody
Code	BT-AP05973
Host	Rabbit
Isotype	IgG
Size	20ul, 50ul, 100ul
Immunogen	The antiserum was produced against synthesized peptide derived from human NF-kappaB p100/p52. AA range:836-885
Mol wt	96749
Species reactivity	Human, Mouse, Rat
Clonality	Polyclonal
Recommended application	WB, IHC-p, ELISA
Concentration	1 mg/ml
Full name	NFkappaB-p100 Antibody
Synonyms	NFKB2; LYT10; Nuclear factor NF-kappa-B p100 subunit; DNA-binding factor KBF2; H2TF1; Lymphocyte translocation chromosome 10 protein; Nuclear factor of kappa light polypeptide gene enhancer in B-cells

This product is for research use only, not for use in human, therapeutic or diagnostic procedure.

Background

NFKB2 encodes a subunit of the transcription factor complex nuclear factor-kappa-B (NFkB). The NFkB complex is expressed in numerous cell types and functions as a central activator of genes involved in inflammation and immune function. Nuclear factor kappa B subunit 2 encoded by NFKB2 can function as both a transcriptional activator or repressor depending on its dimerization partner. The p100 full-length protein is co-translationally processed into a p52 active form. Chromosomal rearrangements and translocations of this locus have been observed in B cell lymphomas, some of which may result in the formation of fusion proteins. There is a pseudogene for NFKB2 on chromosome 18. Alternative splicing results in multiple transcript variants.

Recommended Dilution

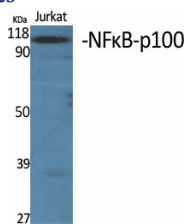
WB: 1: 500 - 1: 2000

IHC: 1: 100 - 1: 300

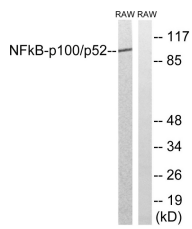
ELISA: 1: 10000

Not yet tested in other applications.

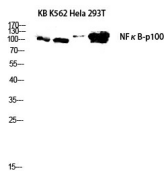
Images



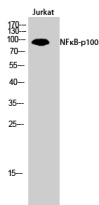
Western Blot analysis of various cells using NFkB-p100 Polyclonal Antibody diluted at 1:2000



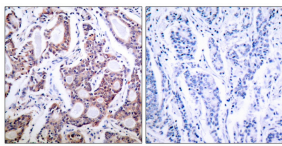
Western blot analysis of lysates from RAW264.7 cells, using NF-kappaB p100/p52 Antibody. The lane on the right is blocked with the synthesized peptide.



Western blot analysis of KB K562 Hela 293T lysis using NFκB-p100 antibody. Antibody was diluted at 1:2000



Western Blot analysis of Jurkat cells using NFκB-p100 Polyclonal Antibody diluted at 1:2000



Immunohistochemistry analysis of paraffin-embedded human breast carcinoma tissue, using NF-kappaB p100/p52 Antibody. The picture on the right is blocked with the synthesized peptide.

Storage

-20°C for one year

501 Changsheng S Rd, Nanhu Dist, Jiaxing, Zhejiang, China

Tel: 86 21 31007137 | E-mail: save@bt-laboratory.com | www.bt-laboratory.com