

NFKappaB-p65 (Acetyl Lys218) Polyclonal Antibody

Description

Product type	Primary Antibody
Code	BT-AP05984
Host	Rabbit
Isotype	IgG
Size	20ul, 50ul, 100ul
Immunogen	The antiserum was produced against synthesized Acetyl-peptide derived from human NFκB-p65 around the Acetylation site of Lys218. AA range:181-230
Mol wt	60219
Species reactivity	Human, Mouse, Rat
Clonality	Polyclonal
Recommended application	WB, IHC-p, ELISA
Concentration	1 mg/ml
Full name	NFκappaB-p65 (Acetyl Lys218) Antibody
Synonyms	RELA; NFKB3; Transcription factor p65; Nuclear factor NF-κappa-B p65 subunit; Nuclear factor of kappa light polypeptide gene enhancer in B-cells 3

This product is for research use only, not for use in human, therapeutic or diagnostic procedure.

Background

NF-κappa-B is a ubiquitous transcription factor involved in several biological processes. It is held in the cytoplasm in an inactive state by specific inhibitors. Upon degradation of the inhibitor, NF-κappa-B moves to the nucleus and activates transcription of specific genes. NF-κappa-B is composed of NFKB1 or NFKB2 bound to either REL, RELA, or RELB. The most abundant form of NF-κappa-B is NFKB1 complexed with the product of this gene, RELA. Four transcript variants encoding different isoforms have been found for RELA.

Recommended Dilution

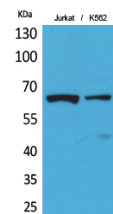
WB: 1: 500 - 1: 2000

IHC-p: 1: 100 - 300

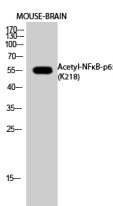
ELISA: 1: 20000

Not yet tested in other applications.

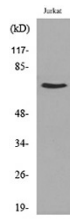
Images



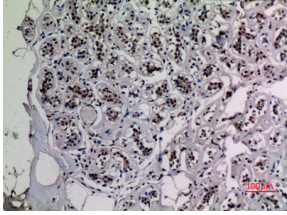
Western Blot analysis of Jurkat, K562 cells using Acetyl-NFκB-p65 (K218) Polyclonal Antibody. Antibody was diluted at 1:1000. Secondary antibody was diluted at 1:20000



Western Blot analysis of MOUSE-BRAIN cells using Acetyl-NFκB-p65 (K218) Polyclonal Antibody diluted at 1:1000. Secondary antibody was diluted at 1:20000



Western blot analysis of lysate from Jurkat cells, using NFκB-p65 (Acetyl-Lys218) Antibody.



Immunohistochemical analysis of paraffin-embedded human-breast, antibody was diluted at 1:100

Storage

-20°C for one year

501 Changsheng S Rd, Nanhu Dist, Jiaxing, Zhejiang, China

Tel: 86 21 31007137 | E-mail: save@bt-laboratory.com | www.bt-laboratory.com