

# NFKappaB-p65 (Mono Methyl Lys314/Lys315) Polyclonal Antibody

## Description

Product type	Primary Antibody
Code	BT-AP05988
Host	Rabbit
Isotype	IgG
Size	20ul, 50ul, 100ul
Immunogen	Synthesized peptide derived from human p65 around the mono-methylation site of K314/K315.
Mol wt	60219
Species reactivity	Human, Mouse, Rat
Clonality	Polyclonal
Recommended application	WB, ELISA
Concentration	1 mg/ml
Full name	NFKappaB-p65 (Mono Methyl Lys314/Lys315) Antibody
Synonyms	RELA; NFKB3; Transcription factor p65; Nuclear factor NF-kappa-B p65 subunit; Nuclear factor of kappa light polypeptide gene enhancer in B-cells 3

This product is for research use only, not for use in human, therapeutic or diagnostic procedure.

## Background

NF-kappa-B is a ubiquitous transcription factor involved in several biological processes. It is held in the cytoplasm in an inactive state by specific inhibitors. Upon degradation of the inhibitor, NF-kappa-B moves to the nucleus and activates transcription of specific genes. NF-kappa-B is composed of NFKB1 or NFKB2 bound to either REL, RELA, or RELB. The most abundant form of NF-kappa-B is NFKB1 complexed with the product of this gene, RELA. Four transcript variants encoding different isoforms have been found for RELA.

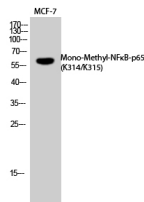
## Recommended Dilution

WB: 1: 500 - 1: 2000

ELISA: 1: 20000

Not yet tested in other applications.

## Images



Western Blot analysis of MCF7 cells using Mono-Methyl-NFκB-p65 (K314/K315) Polyclonal Antibody.

Secondary antibody was diluted at 1:20000

## Storage

-20°C for one year