

NFKappaB-p65 Polyclonal Antibody

Description

Product type	Primary Antibody
Code	BT-AP05994
Host	Rabbit
Isotype	IgG
Size	20ul, 50ul, 100ul
Immunogen	The antiserum was produced against synthesized peptide derived from human NF-kappaB p65. AA range:402-451
Mol wt	60219
Species reactivity	Human, Mouse, Rat, Monkey
Clonality	Polyclonal
Recommended application	WB, IHC-p, ELISA
Concentration	1 mg/ml
Full name	NFKappaB-p65 Antibody
Synonyms	RELA; NFKB3; Transcription factor p65; Nuclear factor NF-kappa-B p65 subunit; Nuclear factor of kappa light polypeptide gene enhancer in B-cells 3

This product is for research use only, not for use in human, therapeutic or diagnostic procedure.

Background

NF-kappa-B is a ubiquitous transcription factor involved in several biological processes. It is held in the cytoplasm in an inactive state by specific inhibitors. Upon degradation of the inhibitor, NF-kappa-B moves to the nucleus and activates transcription of specific genes. NF-kappa-B is composed of NFKB1 or NFKB2 bound to either REL, RELA, or RELB. The most abundant form of NF-kappa-B is NFKB1 complexed with the product of REL, RELA. Four transcript variants encoding different isoforms have been found for RELA.

Recommended Dilution

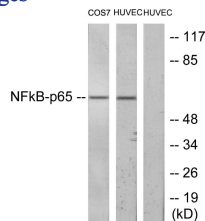
WB: 1: 500 - 1: 2000

IHC: 1: 100 - 1: 300

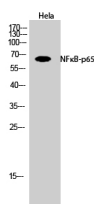
ELISA: 1: 20000

Not yet tested in other applications.

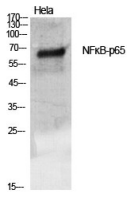
Images



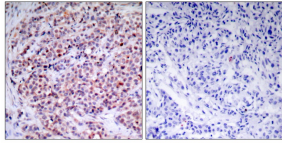
Western blot analysis of lysates from COS7 and HUVEC cells, treated with TNF- α , using NF-kappaB p65 Antibody. The lane on the right is blocked with the synthesized peptide.



Western Blot analysis of HeLa cells using NFkB-p65 Polyclonal Antibody diluted at 1:500



Western Blot analysis of various cells using NFκB-p65 Polyclonal Antibody diluted at 1:500



Immunohistochemistry analysis of paraffin-embedded human breast carcinoma tissue, using NF-kappaB p65 Antibody. The picture on the right is blocked with the synthesized peptide.

Storage

-20°C for one year

501 Changsheng S Rd, Nanhu Dist, Jiaxing, Zhejiang, China

Tel: 86 21 31007137 | E-mail: save@bt-laboratory.com | www.bt-laboratory.com