

## NGF Polyclonal Antibody

### Description

<b>Product type</b>	Primary Antibody
<b>Code</b>	BT-AP06008
<b>Host</b>	Rabbit
<b>Isotype</b>	IgG
<b>Size</b>	20ul, 50ul, 100ul
<b>Immunogen</b>	The antiserum was produced against synthesized peptide derived from human NGF. AA range:33-82
<b>Mol wt</b>	26959
<b>Species reactivity</b>	Human, Mouse, Rat
<b>Clonality</b>	Polyclonal
<b>Recommended application</b>	WB, IHC-p, ELISA
<b>Concentration</b>	1 mg/ml
<b>Full name</b>	NGF Antibody
<b>Synonyms</b>	NGF; NGFB; Beta-nerve growth factor; Beta-NGF

**This product is for research use only, not for use in human, therapeutic or diagnostic procedure.**

### Background

NGF is a member of the NGF-beta family and encodes a secreted protein which homodimerizes and is incorporated into a larger complex. Nerve growth factor has nerve growth stimulating activity and the complex is involved in the regulation of growth and the differentiation of sympathetic and certain sensory neurons. Mutations in NGF have been associated with hereditary sensory and autonomic neuropathy, type 5 (HSAN5), and dysregulation of NGF's expression is associated with allergic rhinitis.

### Recommended Dilution

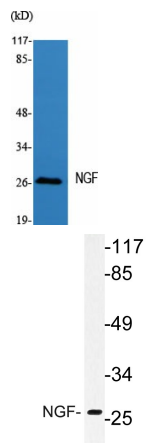
WB: 1: 500 - 1: 2000

IHC: 1: 100 - 1: 300

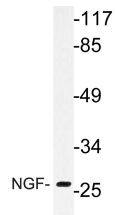
ELISA: 1: 40000

Not yet tested in other applications.

### Images



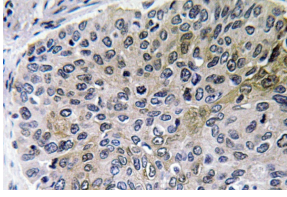
Western Blot analysis of various cells using NGF Polyclonal Antibody diluted at 1:2000



Western blot analysis of lysate from Jurkat cells, using NGF antibody.



Western Blot analysis of Jurkat cells using NGF Polyclonal Antibody diluted at 1:2000



Immunohistochemistry analysis of NGF antibody in paraffin-embedded human lung carcinoma tissue.

### Storage

-20°C for one year

501 Changsheng S Rd, Nanhu Dist, Jiaxing, Zhejiang, China

Tel: 86 21 31007137 | E-mail: [save@bt-laboratory.com](mailto:save@bt-laboratory.com) | [www.bt-laboratory.com](http://www.bt-laboratory.com)