

ACPM Polyclonal Antibody

Description

Product type	Primary Antibody
Code	BT-AP06013
Host	Rabbit
Isotype	IgG
Size	20ul, 50ul, 100ul
Immunogen	Synthesized peptide derived from part region of human protein
Mol wt	N/A
Species reactivity	Human, Mouse
Clonality	Polyclonal
Recommended application	WB, ELISA
Concentration	1 mg/ml
Full name	Acyl carrier protein, mitochondrial
Synonyms	Acyl carrier protein; mitochondrial ;ACP;CI-SDAP;NADH-ubiquinone oxidoreductase 9.6 kDa subunit

This product is for research use only, not for use in human, therapeutic or diagnostic procedure.

Background

Carrier of the growing fatty acid chain in fatty acid biosynthesis in mitochondria. Accessory and non-catalytic subunit of the mitochondrial membrane respiratory chain NADH dehydrogenase (Complex I) which functions in the transfer of electrons from NADH to the respiratory chain. Contains 1 acyl carrier domain. subunit: Mammalian complex I is composed of 45 different subunits.

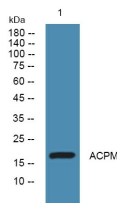
Recommended Dilution

WB: 1: 500 - 1: 2000

ELISA: 1: 5000 - 1: 20000

Not yet tested in other applications.

Images



Western blot analysis of lysates from KB cells, primary antibody was diluted at 1:1000, 4°C overnight

Storage

-20°C for 1 year