

## NHE-7 Polyclonal Antibody

### Description

<b>Product type</b>	Primary Antibody
<b>Code</b>	BT-AP06015
<b>Host</b>	Rabbit
<b>Isotype</b>	IgG
<b>Size</b>	20ul, 50ul, 100ul
<b>Immunogen</b>	The antiserum was produced against synthesized peptide derived from human SLC9A7. AA range:531-580
<b>Mol wt</b>	80131
<b>Species reactivity</b>	Human, Mouse, Rat
<b>Clonality</b>	Polyclonal
<b>Recommended application</b>	WB, ELISA
<b>Concentration</b>	1 mg/ml
<b>Full name</b>	NHE-7 Antibody
<b>Synonyms</b>	SLC9A7; NHE7; Sodium/hydrogen exchanger 7; Na(+)/H(+) exchanger 7; NHE-7; Solute carrier family 9 member 7

This product is for research use only, not for use in human, therapeutic or diagnostic procedure.

### Background

SLC9A7 (solute carrier family 9 member A7) encodes a sodium and potassium/ proton antiporter that is a member of the solute carrier family 9 protein family. The encoded protein is primarily localized to the trans-Golgi network and is involved in maintaining pH homeostasis in organelles along the secretory and endocytic pathways. This protein may enhance cell growth of certain breast tumors. SLC9A7 is part of a gene cluster on chromosome Xp11.3. A pseudogene of SLC9A7 is found on chromosome 12. Alternate splicing results in multiple transcript variants.

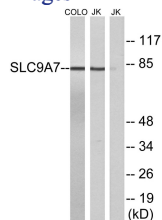
### Recommended Dilution

WB: 1: 500 - 1: 2000

ELISA: 1: 10000

Not yet tested in other applications.

### Images



Western blot analysis of lysates from Jurkat and COLO cells, using SLC9A7 Antibody. The lane on the right is blocked with the synthesized peptide.

### Storage

-20°C for one year