

NHE-8 Polyclonal Antibody

Description

Product type	Primary Antibody
Code	BT-AP06016
Host	Rabbit
Isotype	IgG
Size	20ul, 50ul, 100ul
Immunogen	The antiserum was produced against synthesized peptide derived from human SLC9A8. AA range:451-500
Mol wt	64976
Species reactivity	Human, Mouse, Rat
Clonality	Polyclonal
Recommended application	WB, IHC-p, ELISA
Concentration	1 mg/ml
Full name	NHE-8 Antibody
Synonyms	SLC9A8; KIAA0939; NHE8; Sodium/hydrogen exchanger 8; Na(+)/H(+) exchanger 8; NHE-8; Solute carrier family 9 member 8

This product is for research use only, not for use in human, therapeutic or diagnostic procedure.

Background

Sodium-hydrogen exchangers (NHEs), such as SLC9A8, are integral transmembrane proteins that exchange extracellular Na⁺ for intracellular H⁺. NHEs have multiple functions, including intracellular pH homeostasis, cell volume regulation, and electroneutral NaCl absorption in epithelia (Xu et al. 2008 [PubMed 18209477]).

Recommended Dilution

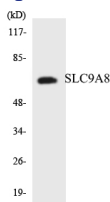
WB: 1: 500 - 1: 2000

ELISA: 1: 20000

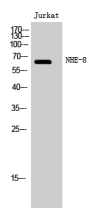
IHC-p: 1: 50 - 300

Not yet tested in other applications.

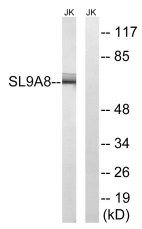
Images



Western blot analysis of the lysates from HeLa cells using SLC9A8 antibody.



Western Blot analysis of Jurkat cells using NHE-8 Polyclonal Antibody



Western blot analysis of lysates from Jurkat cells, using SLC9A8 Antibody. The lane on the right is blocked with the synthesized peptide.

Storage

-20°C for one year

501 Changsheng S Rd, Nanhu Dist, Jiaxing, Zhejiang, China

Tel: 86 21 31007137 | E-mail: save@bt-laboratory.com | www.bt-laboratory.com