

## NHE-9 Polyclonal Antibody

### Description

<b>Product type</b>	Primary Antibody
<b>Code</b>	BT-AP06017
<b>Host</b>	Rabbit
<b>Isotype</b>	IgG
<b>Size</b>	20ul, 50ul, 100ul
<b>Immunogen</b>	The antiserum was produced against synthesized peptide derived from human SLC9A9. AA range:171-220
<b>Mol wt</b>	72565
<b>Species reactivity</b>	Human, Mouse
<b>Clonality</b>	Polyclonal
<b>Recommended application</b>	WB, ELISA
<b>Concentration</b>	1 mg/ml
<b>Full name</b>	NHE-9 Antibody
<b>Synonyms</b>	SLC9A9; NHE9; Nbla00118; Sodium/hydrogen exchanger 9; Na(+)/H(+) exchanger 9; NHE-9; Solute carrier family 9 member 9

This product is for research use only, not for use in human, therapeutic or diagnostic procedure.

### Background

SLC9A9 encodes a sodium/proton exchanger that is a member of the solute carrier 9 protein family. Solute carrier family 9 member A9 localizes to the late recycling endosomes and may play an important role in maintaining cation homeostasis. Mutations in SLC9A9 are associated with autism susceptibility 16 and attention-deficit/hyperactivity disorder.

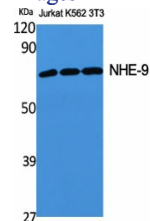
### Recommended Dilution

WB: 1: 500 - 1: 2000

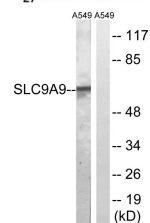
ELISA: 1: 40000

Not yet tested in other applications.

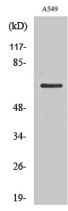
### Images



Western Blot analysis of various cells using NHE-9 Polyclonal Antibody



Western blot analysis of lysates from A549 cells, using SLC9A9 Antibody. The lane on the right is blocked with the synthesized peptide.



Western Blot analysis of RAW264.7 cells using NHE-9 Polyclonal Antibody

### Storage

-20°C for one year

501 Changsheng S Rd, Nanhu Dist, Jiaxing, Zhejiang, China

Tel: 86 21 31007137 | E-mail: [save@bt-laboratory.com](mailto:save@bt-laboratory.com) | [www.bt-laboratory.com](http://www.bt-laboratory.com)