

NHERF-2 Polyclonal Antibody

Description

Product type	Primary Antibody
Code	BT-AP06018
Host	Rabbit
Isotype	IgG
Size	20ul, 50ul, 100ul
Immunogen	Synthesized peptide derived from NHERF-2 . at AA range: 20-100
Mol wt	37414
Species reactivity	Human, Mouse, Rat
Clonality	Polyclonal
Recommended application	WB, ELISA
Concentration	1 mg/ml
Full name	NHERF-2 Antibody
Synonyms	SLC9A3R2; NHERF2; Na(+)/H(+) exchange regulatory cofactor NHE-RF2; NHERF-2; NHE3 kinase A regulatory protein E3KARP; SRY-interacting protein 1; SIP-1; Sodium-hydrogen exchanger regulatory factor 2; So

This product is for research use only, not for use in human, therapeutic or diagnostic procedure.

Background

SLC9A3R2 (SLC9A3 regulator 2) encodes a member of the NHERF family of PDZ scaffolding proteins. These proteins mediate many cellular processes by binding to and regulating the membrane expression and protein-protein interactions of membrane receptors and transport proteins. The encoded protein plays a role in intestinal sodium absorption by regulating the activity of the sodium/hydrogen exchanger 3, and may also regulate the cystic fibrosis transmembrane regulator(CFTR) ion channel. Alternatively spliced transcript variants encoding multiple isoforms have been observed for SLC9A3R2.

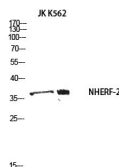
Recommended Dilution

WB: 1: 500 - 1: 2000

ELISA: 1: 10000

Not yet tested in other applications.

Images



Western blot analysis of JK K562 using NHERF-2 antibody. Secondary antibody was diluted at 1:20000

Storage

-20°C for one year