

Nicalin Polyclonal Antibody

Description

Product type	Primary Antibody
Code	BT-AP06023
Host	Rabbit
Isotype	IgG
Size	20ul, 50ul, 100ul
Immunogen	The antiserum was produced against synthesized peptide derived from human NCLN. AA range:474-523
Mol wt	62974
Species reactivity	Human, Mouse, Rat
Clonality	Polyclonal
Recommended application	WB, IHC-p, ELISA
Concentration	1 mg/ml
Full name	Nicalin Antibody
Synonyms	NCLN; Nicalin; Nicastrin-like protein

This product is for research use only, not for use in human, therapeutic or diagnostic procedure.

Background

NCLN (Nicalin) is a Protein Coding gene. May antagonize Nodal signaling and subsequent organization of axial structures during mesodermal patterning.

Recommended Dilution

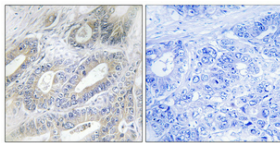
WB: 1: 500 - 1: 2000

IHC: 1: 100 - 1: 300

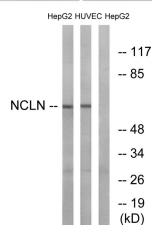
ELISA: 1: 40000

Not yet tested in other applications.

Images



Immunohistochemical analysis of paraffin-embedded Human colon cancer. Antibody was diluted at 1:100(4° overnight). High-pressure and temperature Tris-EDTA,pH8.0 was used for antigen retrieval. Negative contrl (right) obtained from antibody was pre-absorbed by immunogen peptide.



Western blot analysis of lysates from HepG2 and HUVEC cells, using NCLN Antibody. The lane on the right is blocked with the synthesized peptide.

Storage

-20°C for one year