

Nidogen Polyclonal Antibody

Description

Product type	Primary Antibody
Code	BT-AP06026
Host	Rabbit
Isotype	IgG
Size	20ul, 50ul, 100ul
Immunogen	The antiserum was produced against synthesized peptide derived from human NID1. AA range:219-268
Mol wt	136453
Species reactivity	Human, Mouse, Rat
Clonality	Polyclonal
Recommended application	WB, ELISA
Concentration	1 mg/ml
Full name	Nidogen Antibody
Synonyms	NID1; NID; Nidogen-1; NID-1; Entactin

This product is for research use only, not for use in human, therapeutic or diagnostic procedure.

Background

NID1 encodes a member of the nidogen family of basement membrane glycoproteins. The protein interacts with several other components of basement membranes, and may play a role in cell interactions with the extracellular matrix.

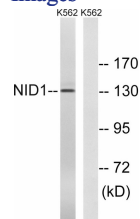
Recommended Dilution

WB: 1: 500 - 1: 2000

ELISA: 1: 20000

Not yet tested in other applications.

Images



Western blot analysis of lysates from K562 cells, using NID1 Antibody. The lane on the right is blocked with the synthesized peptide.

Storage

-20°C for one year