

NIM1 Polyclonal Antibody

Description

Product type	Primary Antibody
Code	BT-AP06028
Host	Rabbit
Isotype	IgG
Size	20ul, 50ul, 100ul
Immunogen	The antiserum was produced against synthesized peptide derived from human NIM1. AA range:347-396
Mol wt	49606
Species reactivity	Human, Mouse
Clonality	Polyclonal
Recommended application	WB, ELISA
Concentration	1 mg/ml
Full name	NIM1 Antibody
Synonyms	NIM1; Serine/threonine-protein kinase NIM1

This product is for research use only, not for use in human, therapeutic or diagnostic procedure.

Background

NIM1K (NIM1 Serine/Threonine Protein Kinase) is a Protein Coding gene. GO annotations related to this gene include transferase activity, transferring phosphorus-containing groups and protein tyrosine kinase activity. An important paralog of this gene is LOC102724428.

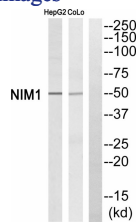
Recommended Dilution

WB: 1: 500 - 1: 2000

ELISA: 1: 10000

Not yet tested in other applications.

Images



Western blot analysis of NIM1 Antibody. The lane on the right is blocked with the NIM1 peptide.

Storage

-20°C for one year

501 Changsheng S Rd, Nanhu Dist, Jiaxing, Zhejiang, China

Tel: 86 21 31007137 | E-mail: save@bt-laboratory.com | www.bt-laboratory.com