

NKIAMRE Polyclonal Antibody

Description

Product type	Primary Antibody
Code	BT-AP06042
Host	Rabbit
Isotype	IgG
Size	20ul, 50ul, 100ul
Immunogen	The antiserum was produced against synthesized peptide derived from human CDKL3. AA range:291-340
Mol wt	67514
Species reactivity	Human
Clonality	Polyclonal
Recommended application	IHC-p, WB, ELISA
Concentration	1 mg/ml
Full name	NKIAMRE Antibody
Synonyms	CDKL3; NKIAMRE; Cyclin-dependent kinase-like 3; Serine/threonine-protein kinase NKIAMRE

This product is for research use only, not for use in human, therapeutic or diagnostic procedure.

Background

The protein encoded by CDKL3 (cyclin dependent kinase like 3) is a member of cyclin-dependent protein kinase (CDK) family. CDK family members are highly similar to the gene products of *Saccharomyces cerevisiae cdc28*, and *Schizosaccharomyces pombe cdc2*, and are known to be important regulators of cell cycle progression. CDKL3 was identified as a gene absent in leukemic patients with chromosome 5q deletion. This loss may be an important determinant of dysmyelopoiesis. Alternative splicing results in multiple transcript variants encoding different isoforms.

Recommended Dilution

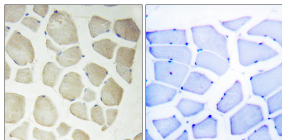
WB: 1: 500 - 2000

ELISA: 1: 5000

IHC: 1: 100 - 1: 300

Not yet tested in other applications.

Images



Immunohistochemistry analysis of paraffin-embedded human skeletal muscle, using CDKL3 Antibody. The picture on the right is blocked with the synthesized peptide.

Storage

-20°C for one year