

NKp46 Polyclonal Antibody

Description

Product type	Primary Antibody
Code	BT-AP06047
Host	Rabbit
Isotype	IgG
Size	20ul, 50ul, 100ul
Immunogen	The antiserum was produced against synthesized peptide derived from human NCR1. AA range:145-194
Mol wt	30655
Species reactivity	Human
Clonality	Polyclonal
Recommended application	WB, ELISA
Concentration	1 mg/ml
Full name	NKp46 Antibody
Synonyms	NCR1; LY94; Natural cytotoxicity triggering receptor 1; Lymphocyte antigen 94 homolog; NK cell-activating receptor; Natural killer cell p46-related protein; NK-p46; NKp46; hNKp46; CD antigen CD335

This product is for research use only, not for use in human, therapeutic or diagnostic procedure.

Background

Cytotoxicity-activating receptor that may contribute to the increased efficiency of activated natural killer (NK) cells to mediate tumor cell lysis.

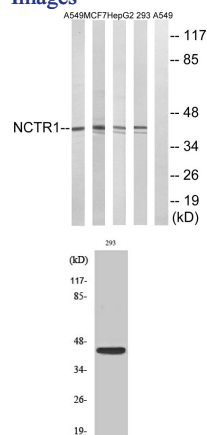
Recommended Dilution

WB: 1: 500 - 1: 2000

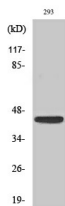
ELISA: 1: 10000

Not yet tested in other applications.

Images



Western blot analysis of lysates from 293, HepG2, MCF-7, and A549 cells, using NCR1 Antibody. The lane on the right is blocked with the synthesized peptide.



Western Blot analysis of various cells using NKp46 Polyclonal Antibody cells nucleus.

Storage

-20°C for one year

