

## NK-TR Polyclonal Antibody

### Description

<b>Product type</b>	Primary Antibody
<b>Code</b>	BT-AP06049
<b>Host</b>	Rabbit
<b>Isotype</b>	IgG
<b>Size</b>	20ul, 50ul, 100ul
<b>Immunogen</b>	The antiserum was produced against synthesized peptide derived from human NKTR. AA range:784-833
<b>Mol wt</b>	165677
<b>Species reactivity</b>	Human
<b>Clonality</b>	Polyclonal
<b>Recommended application</b>	IHC-p, IF, WB, ELISA
<b>Concentration</b>	1 mg/ml
<b>Full name</b>	NK-TR Antibody
<b>Synonyms</b>	NKTR; NK-tumor recognition protein; NK-TR protein; Natural-killer cells cyclophilin-related protein

**This product is for research use only, not for use in human, therapeutic or diagnostic procedure.**

### Background

NKTR encodes a membrane-anchored protein with a hydrophobic amino terminal domain and a cyclophilin-like PPIase domain. It is present on the surface of natural killer cells and facilitates their binding to targets. Its expression is regulated by IL2 activation of the cells.

### Recommended Dilution

WB: 1: 500 - 2000

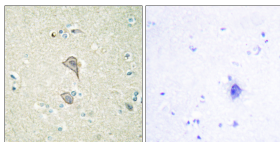
IF: 1: 200 - 1: 1000

ELISA: 1: 40000

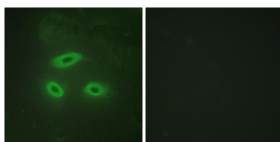
IHC: 1: 100 - 1: 300

Not yet tested in other applications.

### Images



Immunohistochemistry analysis of paraffin-embedded human brain tissue, using NKTR Antibody. The picture on the right is blocked with the synthesized peptide.



Immunofluorescence analysis of HeLa cells, using NKTR Antibody. The picture on the right is blocked with the synthesized peptide.

### Storage

-20°C for one year