

Nkx-2.6 Polyclonal Antibody

Description

Product type	Primary Antibody
Code	BT-AP06052
Host	Rabbit
Isotype	IgG
Size	20ul, 50ul, 100ul
Immunogen	The antiserum was produced against synthesized peptide derived from human NKX26. AA range:91-140
Mol wt	32121
Species reactivity	Human
Clonality	Polyclonal
Recommended application	WB, ELISA
Concentration	1 mg/ml
Full name	Nkx-2.6 Antibody
Synonyms	NKX2-6; NKX2F; Homeobox protein Nkx-2.6; Homeobox protein NK-2 homolog F

This product is for research use only, not for use in human, therapeutic or diagnostic procedure.

Background

Nkx2-6 encodes a homeobox-containing protein that belongs to the NK-2 homeobox family. NK2 homeobox is a vertebrate homolog of Drosophila homeobox-containing protein called 'tinman', which has been shown to be essential for development of the heart-like dorsal vessel. In conjunction with related gene, NKX2-5, Nkx2-6 may play a role in both pharyngeal and cardiac embryonic development. Mutations in Nkx2-6 are associated with persistent truncus arteriosus.

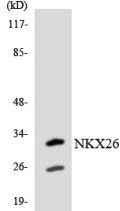
Recommended Dilution

WB: 1: 500 - 1: 2000

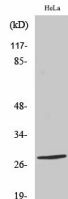
ELISA: 1: 40000

Not yet tested in other applications.

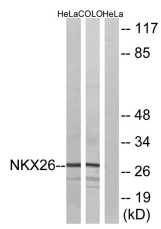
Images



Western blot analysis of the lysates from Jurkat cells using NKX26 antibody.



Western Blot analysis of various cells using Nkx-2.6 Polyclonal Antibody diluted at 1:500



Western blot analysis of lysates from HeLa and COLO cells, using NKX26 Antibody. The lane on the right is blocked with the synthesized peptide.

Storage

-20°C for one year

501 Changsheng S Rd, Nanhu Dist, Jiaxing, Zhejiang, China

Tel: 86 21 31007137 | E-mail: save@bt-laboratory.com | www.bt-laboratory.com